

Reduction in sunlit Earth reflected radiance 317 to 780 nm during the eclipse of 21 August 2017

Jay Herman¹, Guoyong Wen², Alexander Marshak³, Karin Blank³, Liang Huang⁴, Alexander Cede⁵, Nader Abuhassan¹, Matthew Kowalewski⁶

Abstract

Ten wavelength channels of calibrated radiance image data from the sunlit Earth are obtained every 65 minutes during Northern Hemisphere summer from the DSCOVR/EPIC instrument located near the Earth-Sun Lagrange-1 point (L_1), 1.5 million km from the Earth. The L_1 location permitted seven observations of the Moon's shadow on the Earth for about 3 hours during the 21 August 2017 eclipse. Two of the observations were timed to coincide with totality over Casper, Wyoming and Columbia, Missouri. Since, the solar irradiances within 5 channels ($\lambda_i = 388, 443, 551, 680, \text{ and } 780 \text{ nm}$) are not strongly absorbed in the atmosphere, they can be used for characterizing eclipse reduction in reflected radiances for the sunlit face of the Earth containing the eclipse shadow. Five channels ($\lambda_i = 317.5, 325, 340, 688, \text{ and } 764 \text{ nm}$) that are partially absorbed in the atmosphere give consistent reductions compared to the non-absorbed channels. This indicates that cloud reflectivities dominate the 317.5 to 780 nm radiances reflected back to space from the sunlit Earth's disk with a strong contribution from Rayleigh scattering for the shorter wavelengths. A reduction of 10 % in the spectrally integrated radiance (387 to 781 nm) reflected from the sunlit Earth towards L_1 was obtained for two sets of observations on 21 August 2017, while the shadow was in the vicinity of Casper, Wyoming (42.8666° N , 106.3131° W , centered on 17:44:50 UTC) and Columbia, Missouri (38.9517° N , 92.3341° W , centered on 18:14:50 UTC). In contrast, when non-eclipse days (20 Aug. and 23 Aug.) are compared for each wavelength channel, the change in reflected light is much smaller (less than 1 % for 443 nm compared to 9 % (Casper) and 8 % (Columbia) during the eclipse). Also measured was the ratio $R_{\text{EN}}(\lambda_i)$ of reflected radiance on adjacent non-eclipse days divided by radiances centered in the eclipse totality region with the same geometry for all 10 wavelength channels. The measured $R_{\text{EN}}(443 \text{ nm})$ was smaller for Columbia (169) than for Casper (935), because Columbia had more cloud cover than Casper. $R_{\text{EN}}(\lambda_i)$ forms a useful test of 3-D radiative transfer models for an eclipse in the presence of optically thin clouds. Specific values measured at Casper with thin clouds are $R_{\text{EN}}(340 \text{ nm}) = 475$, $R_{\text{EN}}(388 \text{ nm}) = 3500$, $R_{\text{EN}}(443 \text{ nm}) = 935$, $R_{\text{EN}}(551 \text{ nm}) = 5455$, $R_{\text{EN}}(680 \text{ nm}) = 220$, and $R_{\text{EN}}(780 \text{ nm}) = 395$. Some of the variability is caused by changing cloud amounts within the moving region of totality during the 2.7 minutes needed to measure each wavelength channel.

Keywords: Atmospheric Processes, Eclipse, DSCOVR/EPIC, Reflected Energy

Correspondence email: jay.r.herman@nasa.gov

¹University of Maryland Baltimore County JCET

²Morgan State University, Baltimore Maryland

³NASA Goddard Space Flight Center, Greenbelt, Maryland

⁴Science Systems and Applications, Lanham, Maryland

⁵Goddard Earth Sciences Technology & Research (GESTAR) Columbia, Columbia, MD 21046, USA

⁶SciGlob Instruments and Services, Elkridge, Maryland USA

1.0 Introduction

Measured radiances of the entire sunlit Earth were obtained during the 21 August 2017 eclipse from EPIC (Earth Polychromatic Imaging Camera) on the DSCOVR (Deep Space Climate Observatory) satellite. DSCOVR obtains synoptic observations of the Earth from an orbit around the L_1 point (Lagrange 1) 1.5 million km from Earth (Herman et al., 2018). This study focuses on data from two selected locations during the 21 August 2017 eclipse that crossed the United States from west to east. The locations selected were Casper, Wyoming and Columbia, Missouri, both near the center of the path of totality and both with a nearly overhead total solar eclipse (local time 11:45 in Casper, Wyoming and 13:12 in Columbia, Missouri). The sites were selected in advance to have a high probability of almost cloud-free skies, and so that totality would occur about 30 minutes apart in UTC (Coordinated Universal Time) to accommodate the satellite's ability to acquire data. On the day of the eclipse, Casper, Wyoming had almost clear skies (Fig. 1), with some high thin clouds visible, while Columbia, Missouri had thin low altitude cloud cover (Fig. 2).

Observations of total solar eclipses have been made with varying degrees of sophistication for thousands of years as reviewed by Littman et al. (2008). At a given location, observations of reduced irradiance reaching the Earth's surface are limited to just a few minutes of totality and about two hours of partial obscuration (Meeus, 2003). The totality region (umbra) is an oval of about 110 -120 km in size near local noon at Casper, Wyoming and Columbia, Missouri, but will change size and shape as a function of local solar zenith angle (<https://eclipse2017.nasa.gov/eclipse-maps>). Some of the complicating factors concerning quantitative eclipse observations include the effects of the solar corona and light scattered in the atmosphere (Liendo, and Chacin, 2004; Emde and Mayer, 2007).

A detailed analysis of an eclipse that occurred in 2006 over southern Europe includes both ground-based and space-based polar orbiting MODIS (Moderate Resolution Imaging Spectroradiometer) observations of cloud cover before totality (Gerasopoulos et al., 2008) as well as theoretical modelling of the eclipse, but unlike the present study, it was largely limited to local effects near the region of totality. A comparison from a meteorological radiation model and measurements of total solar irradiance were made near Athens Greece (84 % of a total eclipse) that showed good agreement in the presence of light clouds (Psiloglou and Kambezidis, 2007). A 3D Monte Carlo radiative transfer study (Emde and Mayer, 2007) was applied to the geometry for the nearly overhead total eclipse of 29 March 2006 (13:20 local time in Turkey) to estimate the downward global radiation at the surface, but without the effect of clouds included in the calculation. An application of the 3D model to the 2006 eclipse over Kastelorizo, Greece with fairly cloud-free measurements (few cumulus, 1-2 octas, and scattered cirrus, 3-4 octas) at 380 nm showed good agreement for the ratio (ratio = 217) of global surface irradiance starting 5 minutes before totality to that during totality (Kazantzidis et al., 2007). Successful modelling of the light levels during an eclipse under realistic conditions is the first step to improved modelling of high cloud reflection and shadowing of solar radiation on the Earth's energy balance.

The observations from the DSCOVR satellite are part of a larger project that combines simultaneously obtained satellite and ground-based measurements using a pyranometer (Ji and Tsay, 2000) and the Pandora Spectrometer Instrument (Herman et al., 2009) at both sites. The combination

will be used to help validate three dimensional (3D) radiative transfer models applicable to analysis of eclipse effects on radiances reflected back to space and reaching the Earth's surface. This study presents the only calibrated spectral synoptic satellite data of the sunlit Earth ever obtained during an eclipse, which should place tighter limits on validating radiative transfer studies under realistic conditions. The data includes EPIC measured ozone absorption (316 ± 5 DU Casper and 305 ± 5 DU for Columbia, see Fig. A3), O_2 A- and B-band absorption, clouds, aerosols, and scene and surface reflectivity (Herman et al., 2018; Marshak et al., 2018).

DSCOVR observations of the entire sunlit Earth from the eclipse day, 21 August 2017, are compared to those from two non-eclipse days to quantify the change of the global integral of reflected solar radiation caused by the eclipse. We present a potential validation test data set for the 21 August 2017 eclipse for 3D radiative transfer models, namely the ratio of radiances without the eclipse on 20 and 23 August to the same regions that contained totality on 21 August 2017 (based on a suggestion in the paper by Emde and Mayer, 2007).

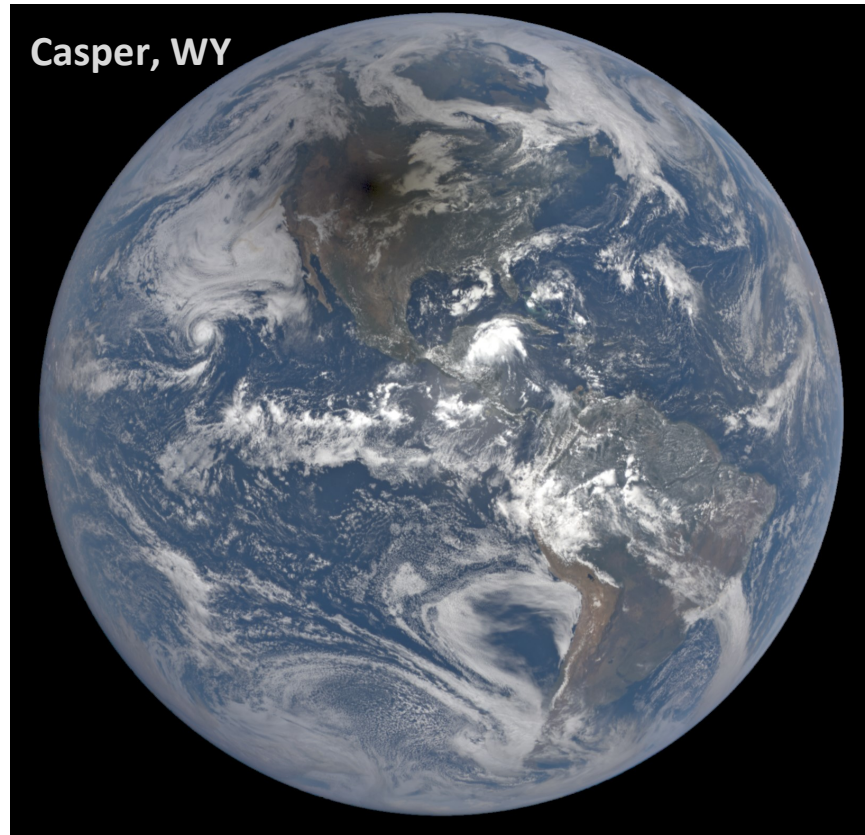


Fig. 1 Synoptic view of the sunlit Earth perturbed by the 21 August 2017 total eclipse centered over Casper, Wyoming at 17:44:50 UTC. The black region is the eclipse umbra centered over Casper, WY. The color image has been adjusted from the images on <https://epic.gsfc.nasa.gov/> by increasing the gamma correction to bring out the region of totality and surrounding clouds.



Fig. 02 Synoptic view of the total eclipse centered over Columbia, Missouri at 18:14:50 UTC. The black region is the eclipse umbra centered over Casper, WY. The color image has been adjusted from the images on <https://epic.gsfc.nasa.gov/> by increasing the gamma correction to bring out the region of totality and surrounding clouds.

Section 2 describes the DSCOVR/EPIC instrument, available data, and monochromatic images based on measured counts per second, C/s. Section 3.1 presents a comparison between eclipse and non-eclipse days. Section 3.2 gives an estimate of the global reduction of reflected sunlight during the eclipse over Casper, WY and Columbia, MO.

2.0 EPIC Instrument and Data Description

The EPIC instrument onboard the DSCOVR spacecraft, in a six-month orbit near the L_1 point since June 2015, observed the Moon's shadow for about 3 hours. The EPIC data comprises a set of seven observations (16:44 to 19:44 UTC) starting in the Pacific Ocean and ending in the Atlantic Ocean, while synoptically observing the entire sunlit disk of the Earth (nominal size 0.5°). EPIC is a 10 wavelength filter camera with a 2048x2048 pixel CCD (charge couple detector) using a 30-cm aperture Cassegrain telescope with a field of view (FOV) of 0.62° that continuously points at the sunlit Earth. The sampling size on the Earth is nominally 8 km at the center of the image with an effective spatial resolution of $10 \times 10 \text{ km}^2$ for the 443 nm channel and $17 \times 17 \text{ km}^2$ for the remaining 9 filter channels. Operation of EPIC consists of sequentially selecting a filter from 2 rotatable filter wheels and an exposure time using a rotating disk shutter mechanism. Invariant exposure times were set at the beginning of the on-orbit

mission to fill the CCD wells to about 80 % and avoid blooming (a saturated pixel affecting its neighbors). The CCD was calibrated for the sensitivity differences between the pixels (flatfielding), and measurements were made in the laboratory and in-flight to obtain corrections for stray light effects. Corrections for dark current are applied based on periodic measurements with the shutter closed. EPIC is kept centered on the Earth during its 6-month north-south tilted Lissajous orbit about the Earth-Sun L_1 point. The spacecraft is never closer than 4° from the Earth-Sun line, which makes it possible to observe an eclipse without the Moon being in the FOV. On 21 August 2017, DSCOVR was 7.7° from the Earth-Sun line. A more detailed description of EPIC is given in Herman et al. (2018) and Marshak et al., (2018).

The geolocated EPIC data (Counts per second, C/s) from each set of 10 wavelengths are contained in an HDF5 formatted file available from the permanent NASA Langley data repository center (https://eosweb.larc.nasa.gov/project/dscovr/dscovr_epic_l1b). Contained in each Level-2 data HDF5 file are the 2048 x 2048 array of C/s measured by EPIC and a common latitude and longitude grid. The geolocated data are organized corresponding to the rectangular CCD grid, 1 data point per CCD pixel. For the time of the eclipse, the illuminated CCD pixels are within a circular boundary corresponding to $N_p = 2.59 \times 10^6$ illuminated pixels (illuminated pixels formed a circle of 1816 pixels in diameter out of a maximum of 2048 pixels. To reduce the volume of telemetry data, all measurements, except those from the 443 nm channel, were 2x2 averaged onboard DSCOVR to 1024 x 1024 pixels. After geolocation onto a common latitude x longitude grid, the data from all channels are presented as 2048 x 2048 points with off-earth points represented as a fill value “infinity”. All of the data products (e.g., ozone amounts) are also available at the above repository center.

The EPIC file names from the NASA data repository are interpreted as Year 2017, Month 08, Day 21, UTC 17:44:50, Version 2, which is 11:44:50 local daylight savings time in Casper, Wyoming. The filename time refers to approximately the middle of the measurement sequence. Totality in Casper started at 11:42:39 and ended at 11:45:05. Version 2 refers to the reprocessing of data with the latest CCD flat-fielding and stray-light corrections (Herman et al., 2017; Marshak et al., 2017; Geogdzhayev and Marshak, 2017), and the geolocation algorithms.

The observing conditions for 21 August 2017 ranged from significant cloud cover over the oceans to nearly clear skies over the United States (Figs. 1 and 2). The synoptic observations provided a unique opportunity to estimate the fraction of reduced reflected radiation from the entire sunlit Earth caused by a total solar eclipse. Two of the synoptic observations were timed so that they centered on Casper, Wyoming (42.8666° N, 106.3131° W, 17:44:50 UTC) and Columbia, Missouri (38.9517° N, 92.3341° W, 18:14:50 UTC). Ten narrowband images were obtained at center vacuum wavelengths λ_i of 317.5 ± 0.5 , 325 ± 0.5 , 340 ± 1.3 , 388 ± 1.3 , 443 ± 1.3 , 551 ± 1.5 , 680 ± 0.8 , 688 ± 0.42 , 764 ± 0.5 and 779.5 ± 0.9 nm (Herman et al., 2018). Of these, 388, 443, 552, 680, and 779 nm radiances are not strongly absorbed in the atmosphere and are used for estimating the reduction in reflected radiances from the Earth. The others are strongly affected either by ozone (317, 325, 340 nm) or oxygen absorption (688, 764 nm) in the atmosphere, but give similar radiance percent reductions during the eclipse compared to non-absorbed channels.

The non-absorbed wavelength observations were combined to produce eye-realistic color images (<https://epic.gsfc.nasa.gov>). For this eclipse day study, 21 August, the original color images were modified by increasing the gamma correction to better show the umbra over Casper, Wyoming and Columbia, Missouri (Figs. 1 and 2 based on a suggestion by Steven Albers and Michael Boccara, 2017, Private Communication). The images include Rayleigh scattering effects that cause light from the penumbral region to increase illumination within the umbra along with scattering from clouds and aerosols.

Table 1 summarizes eclipse timing and location details for Casper, Wyoming. During the 2.7 minutes needed to obtain the five listed wavelength channel images, the center of totality moves at about 46 km/minute or covering approximately 124 km. Based on the image in Fig. 1, the entire measurement took place within the observed nearly clear-sky region surrounding Casper, Wyoming. A similar table could be constructed for the eclipse totality region near Columbia, Missouri.

Table 1 *Eclipse Measurement Timing and Location Details for 5 Wavelengths*
Eclipse Maximum and EPIC Image Times. Total Measurement Duration 2.7 minutes

Wavelength (nm)	Date and Time	Location Name	Longitude
	2017-08-21 17:35:40	Eclipse West Edge of WY state	-111°02'
551	2017-08-21 17:42:36	West of Casper	-106°22'
680	2017-08-21 17:43:30	West of Casper	-106°21'
Casper Wyoming	2017-08-21 17:43:51	Casper WY	-106°19'
780	2017-08-21 17:44:24	Near Glenrock WY	-105°52'
443	2017-08-21 17:44:50	West of Douglas WY	-105°14'
388	2017-08-21 17:45:18	West of Douglas WY	-105°17'
	2017-08-21 17:48:04	Eclipse East Edge of WY state	-104°03'

The timing and predicted shape of the Moon's shadow over Casper, Wyoming and Columbia, Missouri can be seen at <https://eclipse2017.nasa.gov/eclipse-maps>. An annotated portion of the figures for Casper and Columbia are reproduced in the Appendix (Fig. A1). The predicted totality shadow (Fig. A1) over Casper was elliptical in shape with a width of about 116 km (about 1.5° in latitude or longitude). The similar drawing for Columbia, Missouri shows a more nearly circular region of totality. The dimension of the partial eclipse for 90 % obscuration is about 5° in latitude or longitude. The region of 75 % obscuration covers a latitude range 32° to 46° or about 1200 km. An obscuration region of this size produces a significant decrease in the percentage of total solar irradiance reaching the Earth's surface and in the amount reflected back to space. EPIC synoptically measures both the local and sunlit portion of the global percent change in reflected radiance, which is approximately the same as the percent change in global surface irradiance for the wavelength range from 388 to 780 nm. An exception is within the umbral region, where the percent change is larger at the surface than at the top of the atmosphere. The three wavelength channels shorter than 388 nm are affected by ozone absorption and also do not contribute much to the sum of reflected radiances compared to the range from 388 to 780 nm. The energy content of 317 to 340 nm are not included in the quantitative estimate of broadband (UV + visible) reduced reflected radiance, nor are the strongly absorbed O₂ A- and B-band channels, 688 and 764 nm, included. However, the effects of the eclipse on all 10 channels are individually estimated.

2.1 Monochromatic Eclipse Images

Before quantitatively examining the EPIC data from the eclipse in units of C/s or reflectance, the same data can be represented as monochrome grey-scale images. The images (Fig. 3 with North down) range from 340 nm, with strong Rayleigh scattering effects and some ozone absorption, to 780 nm in the near infrared. North is selected as down to correspond to a 3D projection image presented later. Because of the clarity of the atmosphere at 780 nm, the image serves as a geographic map of the Earth as viewed by EPIC where North and South America are clearly visible.

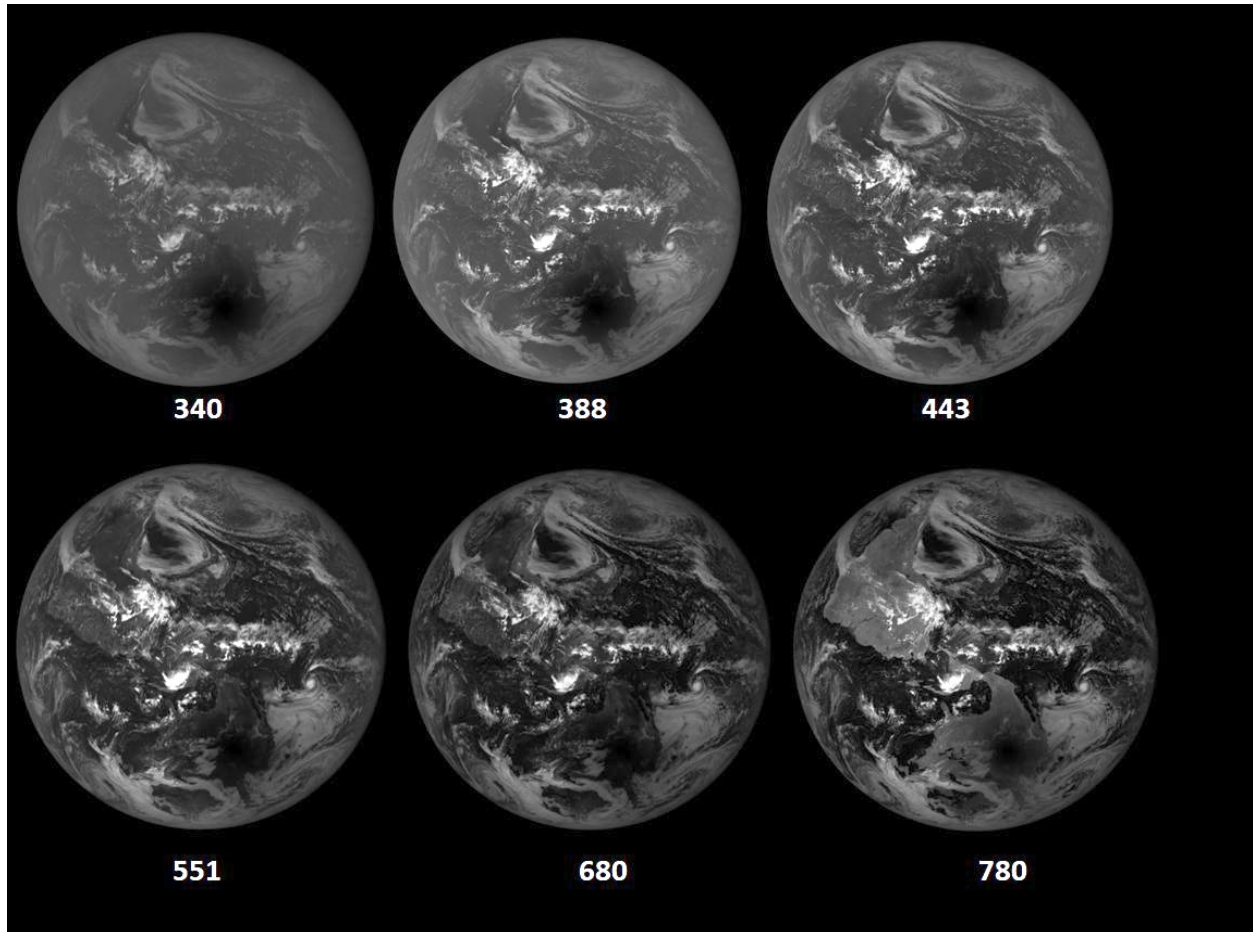


Fig. 3 Greyscale images for 6 of the DSCOVR/EPIC channels for the eclipse over Casper Wyoming showing the blurring caused by Rayleigh scattering and the dark land and ocean surfaces at 340 nm to the almost clear atmosphere and bright continental surfaces at 780 nm. The images were obtained over a period of 2.7 minutes. North is facing down.

3.0 Results

3.1 Comparison of EPIC Observations of Eclipse Totality (21 Aug) with Non-Eclipse Days (20 and 23 Aug) for Casper, WY and Columbia, MO

Atmospheric conditions during the eclipse at Casper, Wyoming were almost cloud-free compared to Columbia, Missouri, which had optically thin low altitude clouds (Fig. 2). Figure 4 shows the cloud cover on the day of the eclipse, 21 August 2017 (panel A) about 90 minutes before totality at Casper and about 2 hours after totality. The images (north is up) show that the skies remained relatively clear over the northern United States for the duration of the eclipse. A similar set of images (panel B) are shown for the day before (20 August) and two days after the eclipse (23 August). There was no useable data available on 22 August. Data obtained on 20 and 23 Aug. at approximately the same UTC (backscatter phase angle for a given location on Earth) as occurred during the total eclipse are used as reference data to compare with the eclipse data on 21 Aug. The basic global patterns of cloud cover are similar for all three days, but not identical. As shown later, the amount of light reflected back to space is approximately the same on the two non-eclipse days 20 August and 23 August.

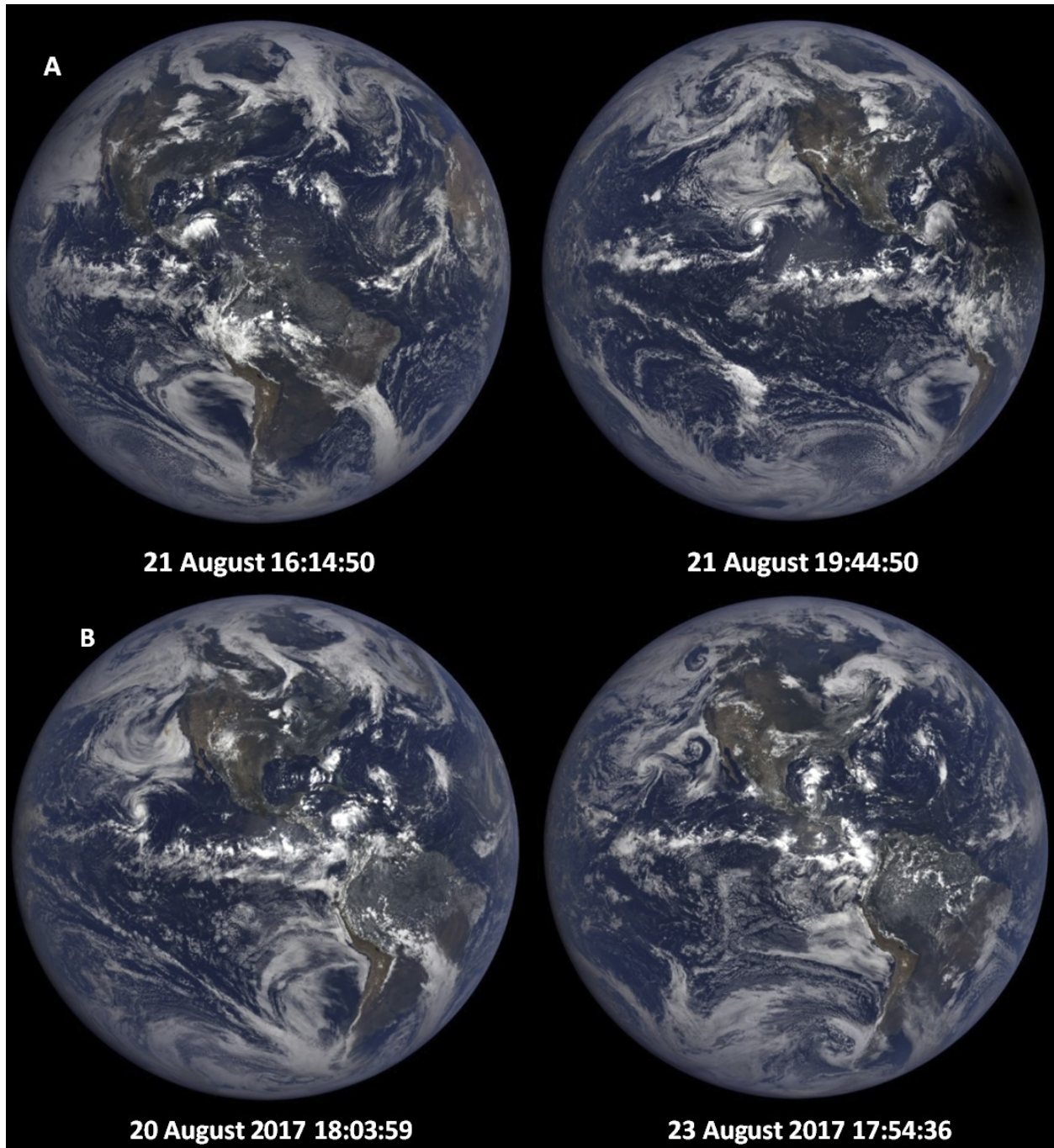


Fig. 4 Panel A: Synoptic natural color images on 21 August at 16:14 and 19:44 before and after the eclipse over the US, and Panel B: the days before and after the eclipse selected to be as close as possible to the phase angle (UTC 17:44:50) as the time of totality over Casper, Wyoming. North is facing up.

206

207 Figure 5 (upper panels A and B) shows longitudinal slices of 443 nm reflected solar radiances in
 208 C/s towards L_1 through the locations corresponding to Casper, Wyoming and Columbia, Missouri at their
 209 respective times of totality. The lower panels (C and D) of Fig. 5 show 443 nm measurements in C/s on
 210 20 Aug at 18:04 UTC before the eclipse for nearly identical solar phase angle conditions for both sites.

The effect of clouds at the Columbia site compared to Casper can be seen in terms of the depth of the umbra (Panels A: ratio = 1530 and B: ratio = 37) relative to the average C/s from -140° to -150° longitude. Similarly, on the preceding day, 20 Aug (panels C and D), the cloud effect is small at Casper, 1.2×10^4 C/s, compared to Columbia, 5×10^4 C/s and just to the west of Columbia, 1.3×10^5 C/s.

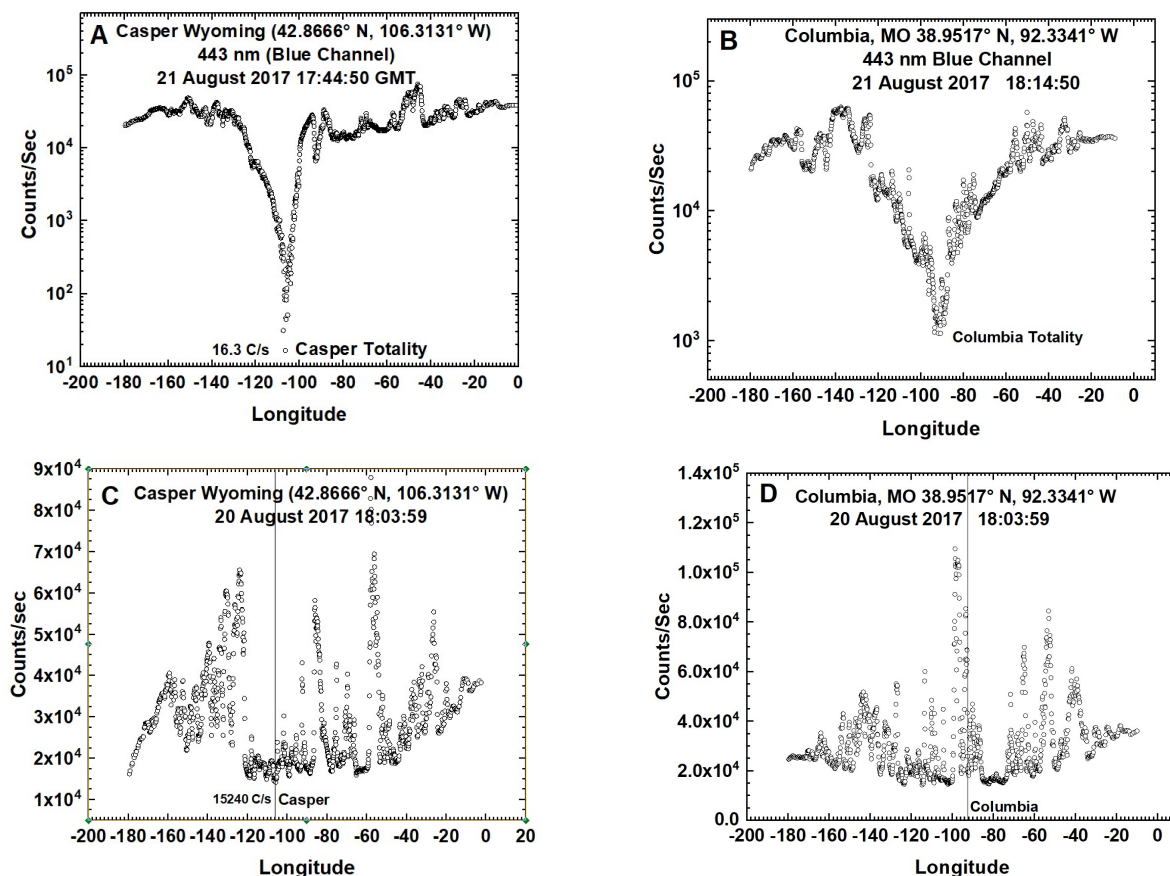


Fig. 5 Top: The effect of an eclipse (21 Aug) on the measured C/s reflected back to space as a function of longitude (degrees) for two locations, Casper Wyoming (left) and Columbia Missouri (right). Bottom: Measured C/s reflected back to space on 20 Aug. A log₁₀ scale is used to show details of the spatial variability mostly caused by clouds.

The minimum 443 nm values during totality are 16.6 C/s for Casper and 312 C/s for Columbia. On 20 Aug. EPIC measured 15240 C/s and 52728 C/s, respectively, showing the effect of increased cloudiness for Columbia. While Fig. 5 is expressed in C/s, the data can be converted to radiance $W/(m^2 \text{ nm sr})$ based on an in-flight determined radiance calibration coefficient of $K_R(443\text{nm}) = 5.291 \times 10^{-6} W/(m^2 \text{ nm sr C/s})$ (Geogdzhayev and Marshak, 2017; Marshak et al., 2018; Herman et al. 2018). For 443 nm channel, an average count rate for the illuminated earth is 3×10^4 C/s corresponding to a radiance of $0.159 W/(m^2 \text{ nm sr})$. EPIC calibration constants for 8 of the 10 channels were obtained by in-flight comparisons of reflectance measured by two well calibrated low Earth orbiting satellite instruments, OMPS (Ozone Mapping Profiler Suite for UV channels) and MODIS (Moderate Resolution Imaging Spectroradiometer for visible and near-IR channels) for simultaneously viewed Earth areas with the

same satellite view and solar zenith angles (Herman et al., 2018; Geogdzhayev and Marshak, 2017). The O₂ A- and B-band channels were calibrated using lunar data when the Moon was within the field of view of EPIC. Detailed discussions and values of all EPIC calibration coefficients $K(\lambda)$ are given by Geogdzhayev and Marshak (2017), Herman et al, (2018) and Marshak et al., (2018). Most of the conclusions in this study are in terms of C/s from the same wavelength channel at approximately the same solar phase angle that are independent of the absolute calibration conversion from C/s to radiance.

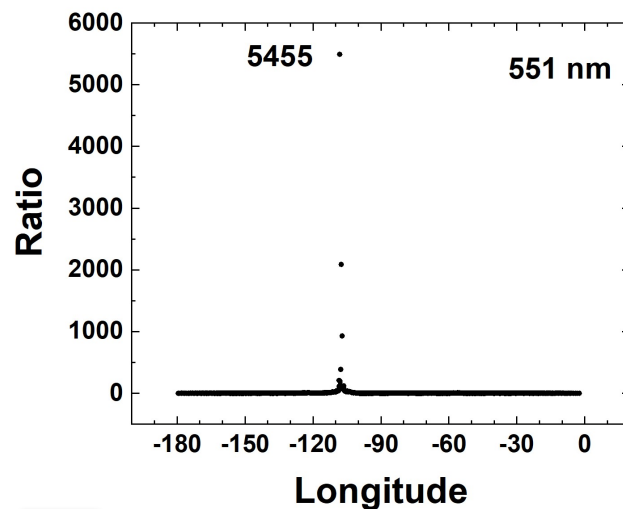
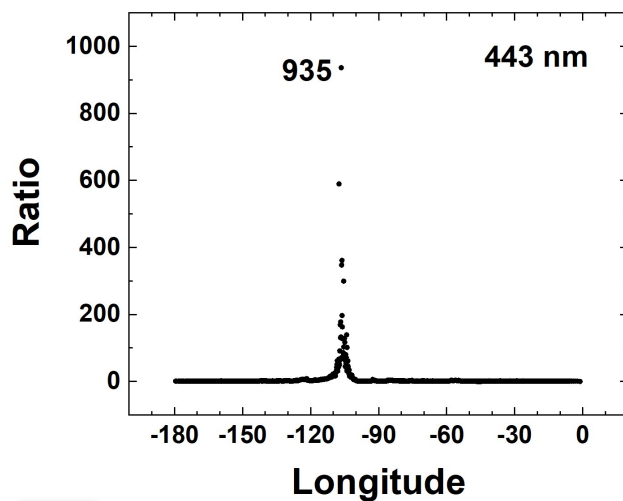
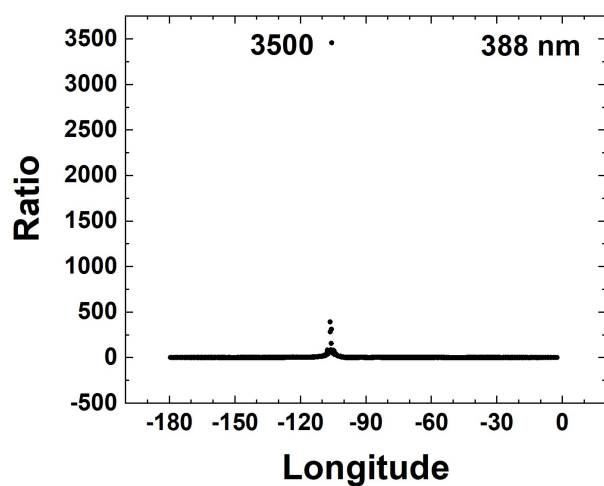
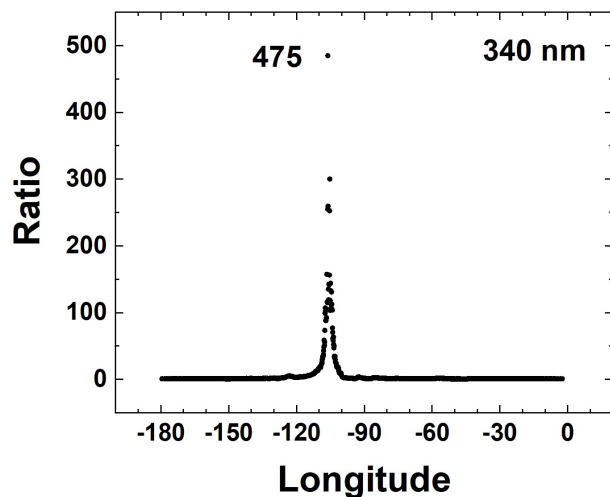
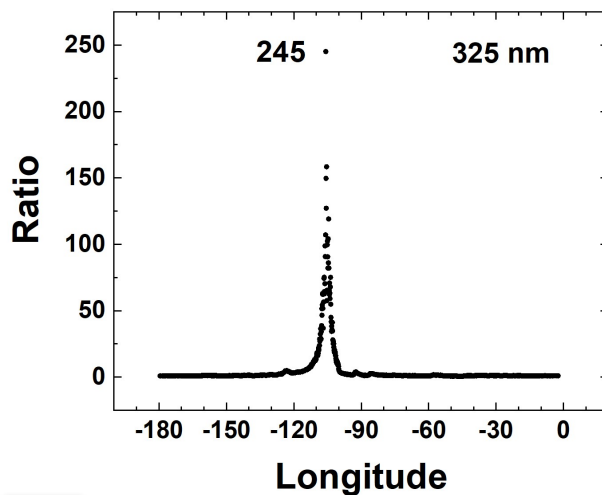
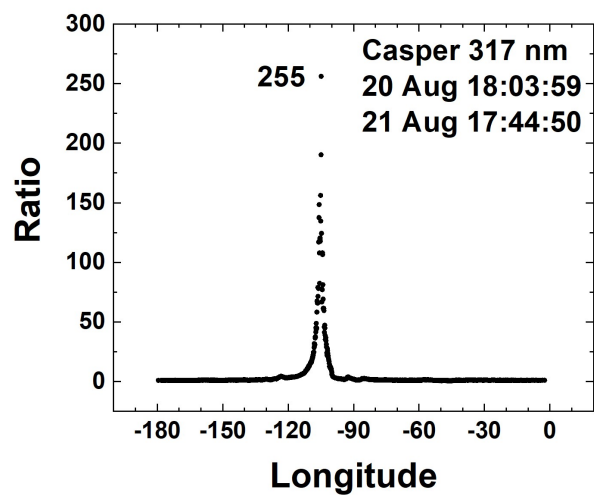
The ratio $R_{EN}(\lambda_i) = I(20 \text{ August})/I(21 \text{ August})$ is used to characterize the eclipse effects at the top of the atmosphere. Because the solar phase angles are nearly the same, the effects of the 172° backscatter angle (“hot spot” caused mostly by minimized shadows) and ocean specular reflection are also nearly the same on both days.

There is considerable variability in $R_{EN}(\lambda_i) = I(20 \text{ August})/I(21 \text{ August})$ as a function of wavelength that is partially caused by the 2.7 minutes needed to obtain measurements for all 10 wavelengths. During the 2.7 minutes, the center of totality moved about 124 km or about 1.7° longitude, meaning that the ratio was affected by atmospheric variability (mostly cloud effects) in the successive scenes containing the eclipse totality for each wavelength. The ratios $R_{EN}(\lambda_i)$ of C/s on the eclipse day to the preceding non-eclipse day are shown in Fig. 6 for all 10 wavelength λ_i channels and two sites (Casper, Fig 6a and Columbia, Fig. 6b) and summarized in Table 2. The same reference data from 20 Aug is used for both sites, since it was the closest in UTC for both the Casper and Columbia eclipse times.

Table 2 Maximum Radiance Ratio $R_{EN}(\lambda_i)$ during eclipse totality 17:44:50 UTC (Casper) and 18:14:50 UTC (Columbia) compared to 20 Aug. at 18:03:59 for both sites (see Fig. 6).

Wavelength λ_i (nm)	Max. $R_{EN}(\lambda_i)$ C/s Casper, Wyoming	Max. $R_{EN}(\lambda_i)$ C/s Columbia, Missouri
317.5	255	50
325	245	49
340	475	59
388	3500	81
443	935	169
551	5455	183
680	220	171
688	365	246
764	302	92
780	395	38

249



250

251

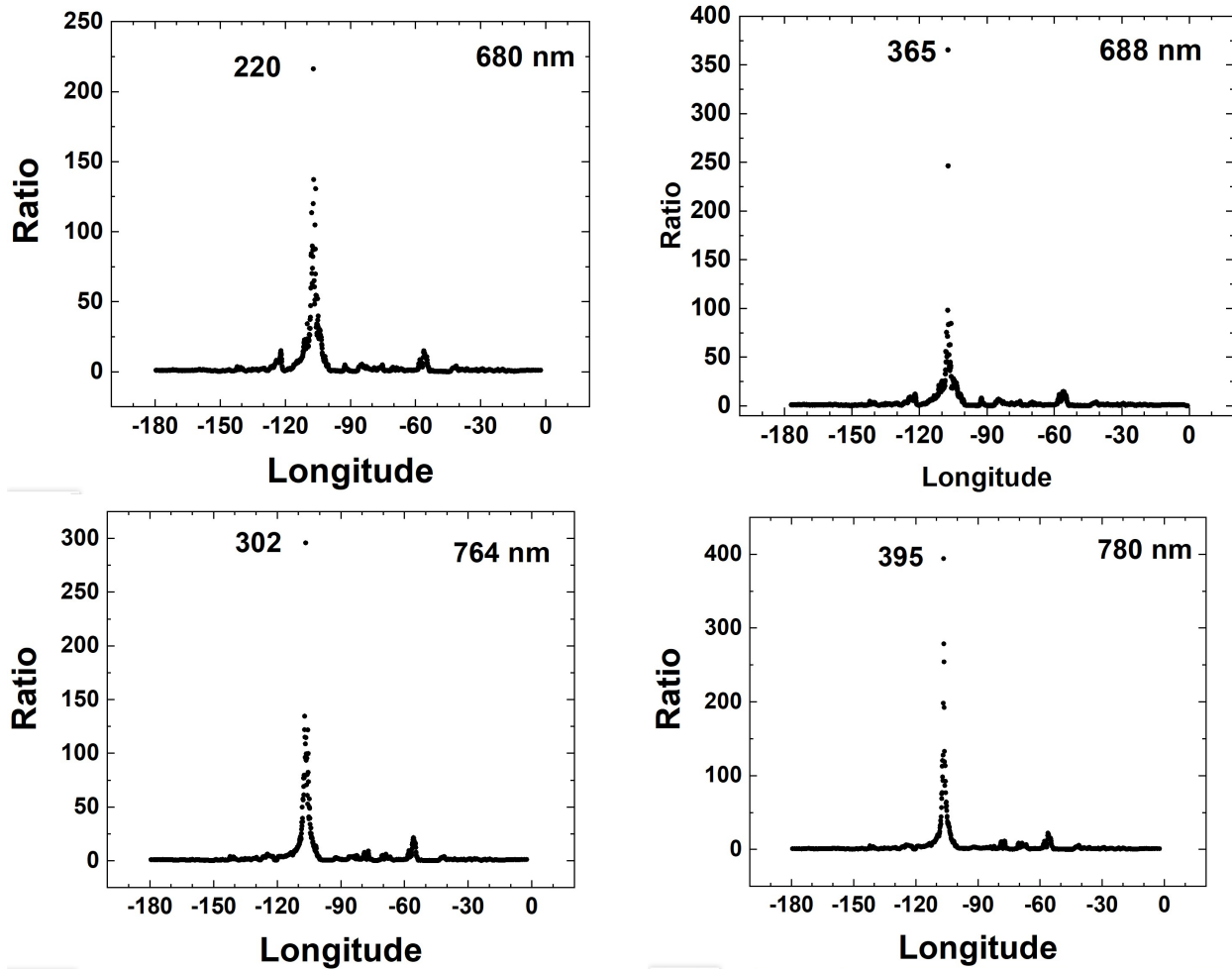
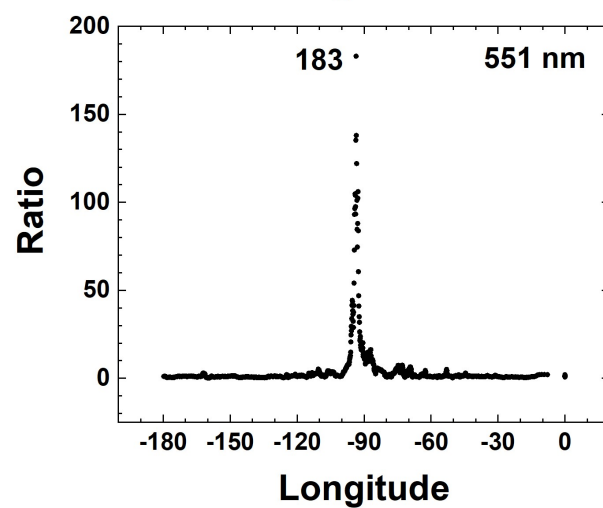
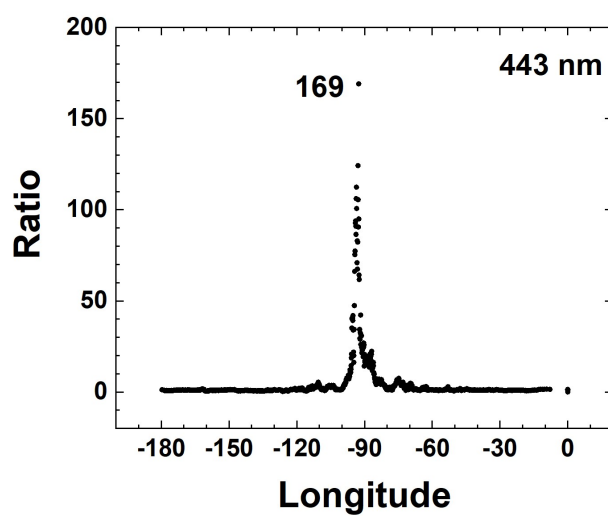
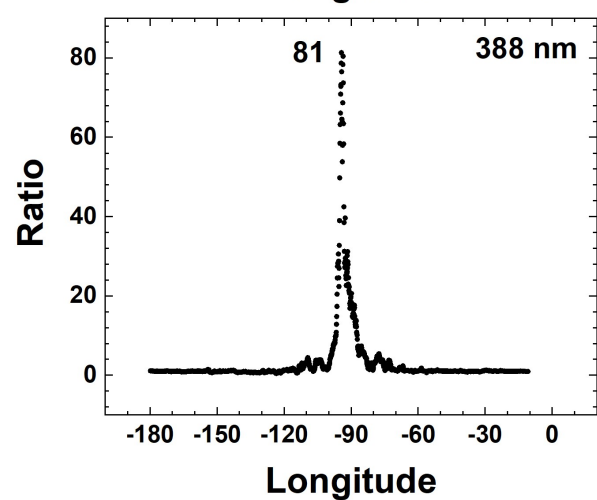
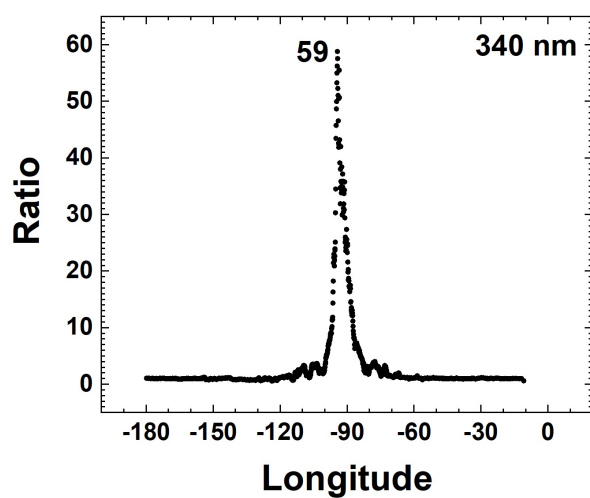
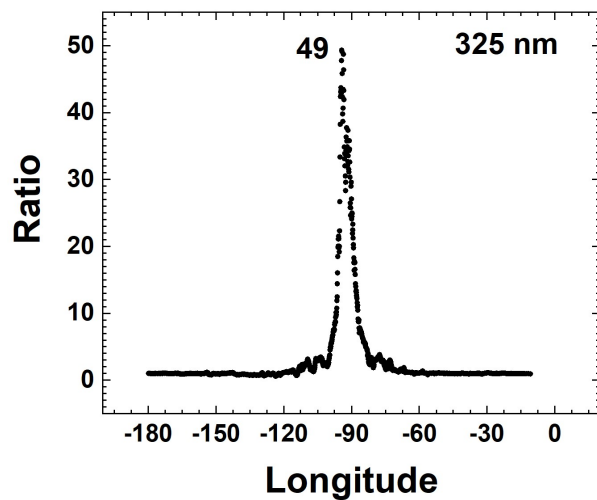
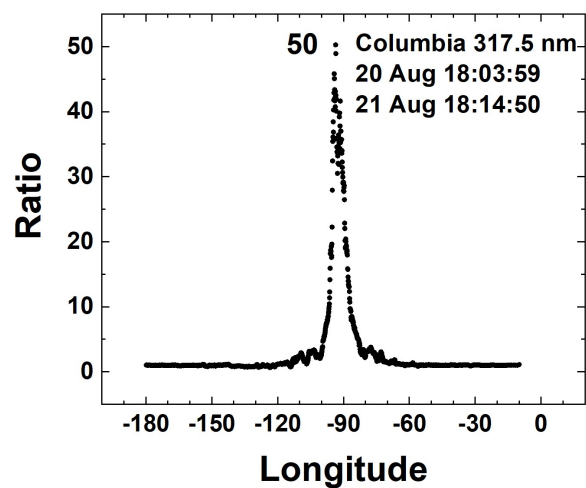


Fig. 6a. The ratio $R_{EN}(\lambda_i) = I(\text{Aug20})/I(\text{Aug21})$ at the time of the Eclipse in Casper Wyoming for wavelengths 317.5 to 780 nm. The channels 317.5 to 240 nm are affected by ozone absorption and the channels 688 and 764 nm are within the O_2 B and A absorption bands.

252

253



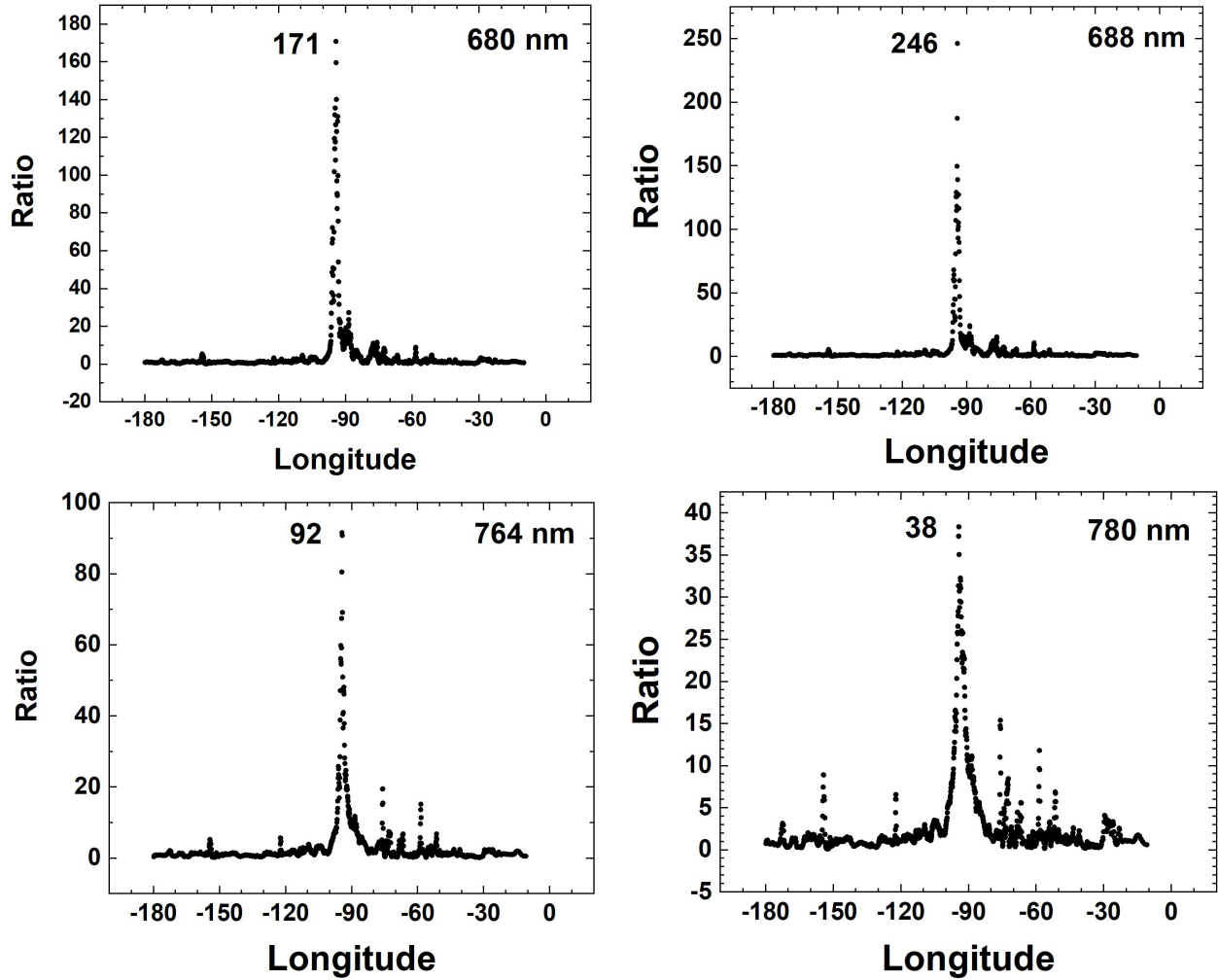


Fig. 6b. The ratio $R_{EN}(\lambda_i) = I(\text{Aug20})/I(\text{Aug21})$ at the time of the Eclipse in Columbia, Missouri for wavelengths 317.5 to 780 nm. The channels 317.5 to 340 nm are affected by ozone absorption and the channels 688 and 764 nm are within the O_2 B and A absorption bands.

255

256

257

258

259

260

261

262

263

264

265

266

267

For the eclipse study, the range of synoptically observed longitudes is approximately from the international dateline (-180°) to almost longitude of Greenwich, England (0°). The nearly clear-sky in Casper with optically thin high cirrus clouds permits the reflected light during totality to become very small (about 17 C/s for 443 nm compared to 1.5×10^4 C/s on 20 August at the same longitude). Columbia had more low altitude cloud cover than Casper (Fig. 2) with the cloud cover extending into the region of totality. The effect of this cloud cover can be seen in Fig. 6, where the maximum $R_{EN}(443, \text{Columbia}) = 169$ compared to 935 for Casper. Table 2 provides the eclipse radiance ratio $R_{EN}(\lambda_i)$ for the five non-absorbed wavelength and 5-absorbed channels that can help validate 3D radiative transfer models. The measured lower values $R_{EN}(\lambda_i)$ at Columbia compared to Casper show that there is high sensitivity in the TOA upwelling measured ratios to the presence of even optically thin clouds. A detailed radiative transfer study for realistic conditions is made feasible by using EPIC's simultaneous estimates of cloud reflectivity and transmission, cloud height, ozone amounts, (Fig. A3 and Herman et al., 2018), and

aerosol amounts (Torres et al., 2018 private communication). These data products are available from the NASA-Langley data repository referenced above.

3.2 Global reduction of reflected sunlight during the eclipse over Casper WY

The unique DSCOVR/EPIC measurements provide estimates of the fractional reduction of sunlight from 388 to 780 nm reflected back to space for the entire sunlit globe caused by the eclipse shadow on the Earth. To do this, all of the light reaching EPIC in each of the five non-absorbed channels, 388, 443, 551, 680, and 780 nm, are integrated over the visible sunlit Earth and compared (percent difference $PD(\lambda_i)$) with a nearly identical viewing geometry (nearly the same UTC) from the previous and next days. The assumption is that the major cloud features change slowly on a global scale over relatively short periods (Figs. 1 to 3). A test of this hypothesis is that the PD between successive non-eclipse days is small compared to the eclipse day $PD(\lambda_i)$ with a non-eclipse day.

In the 3D Fig. 7 for 443 nm, the nearly cloud free eclipse region is the blue area in the midst of greens, yellows, and reds. The high red values correspond to fairly reflective clouds mostly seen near the equator (Fig. 1). The yellows and greens correspond to lower altitude clouds that tend to have smaller reflectivities. Integrating over all of the pixels for the eclipse on 21 August 2017, using the file named epic_1b_20170821174450_02.h5, we get $S(\text{DOY}, \text{UTC}) = 5.34366 \times 10^{10}$ C/s for DOY=233 (21 August 2017) and UTC=17:44:50. For the eclipse day, the 443 nm average C/s = 2.0631×10^4 , which corresponds to $2.0631 \times 10^4 K_R(443 \text{ nm}) = 0.11 \text{ W}/(\text{m}^2 \text{ nm sr})$. Peak values are approximately 1×10^5 C/s, or about $0.53 \text{ W}/(\text{m}^2 \text{ nm sr})$. Figure 7 is oriented with north down so as to be able to see into the eclipse shadow region. A similar figure is obtained for Columbia, Missouri with reduced depth caused by some visible light cloud cover extending into the region of totality.

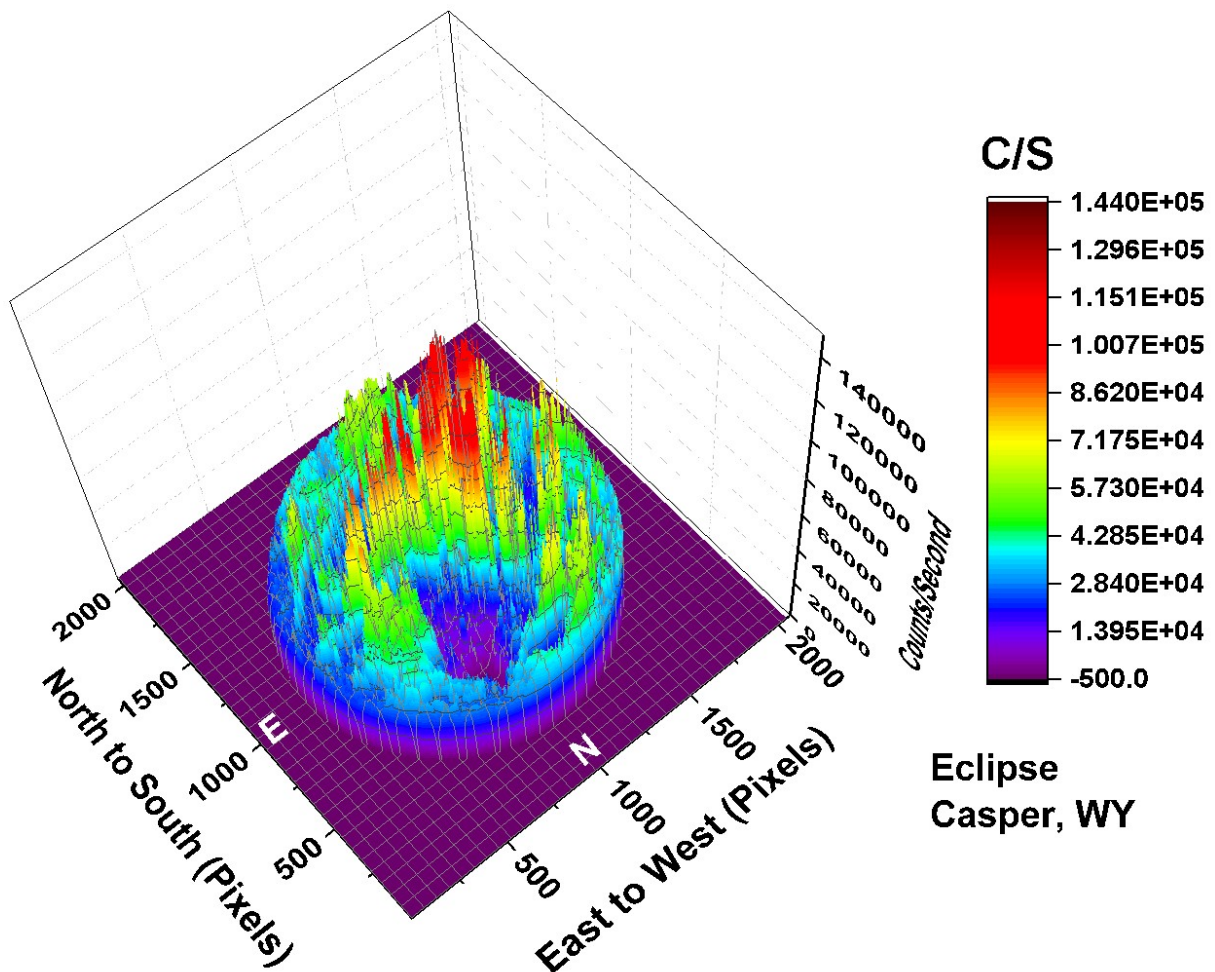


Fig. 7 The C/s observed by EPIC for the 443 nm channel corresponding to the color image shown in Fig. 1. In the data file, the fill-word infinity has been replaced by the number zero. In this image there are approximately $N_p = 2.59 \times 10^6$ illuminated pixels out of $2048^2 = 4.194304 \times 10^6$ pixels (61.8 %).

Measured C/s images for six wavelength channels (340 to 780 nm) on 20, 21, and 23 August (Fig. 8) were selected to be as close as possible to the UTC time of the eclipse in Casper Wyoming, keeping the scattering phase angles nearly constant. Similar images for the strongly absorbed channels 317.5, 325, 688, 764 nm channels are shown in the appendix (Fig. A2). The middle images in panels B and E of Figs. 8a, 8b and 8c are for the eclipse over Casper, Wyoming. These images are in the same format as Fig. 3, but rotated with north up. Unlike Fig. 3, The scale in Fig. 8 was selected so that the brightest clouds do not saturate the image. The increase in scale makes the land surfaces less visible. While the figures are similar from wavelength to wavelength, there are differences in the depth of the eclipse totality and the reflectivities of the surrounding clouds. In general, the equatorial clouds with higher C/s (reflectivities) tend to reach higher altitudes. This is confirmed by examining the C/s in the strongly absorbed O₂ A-band channel (Fig. A2b and Herman et al., 2018).

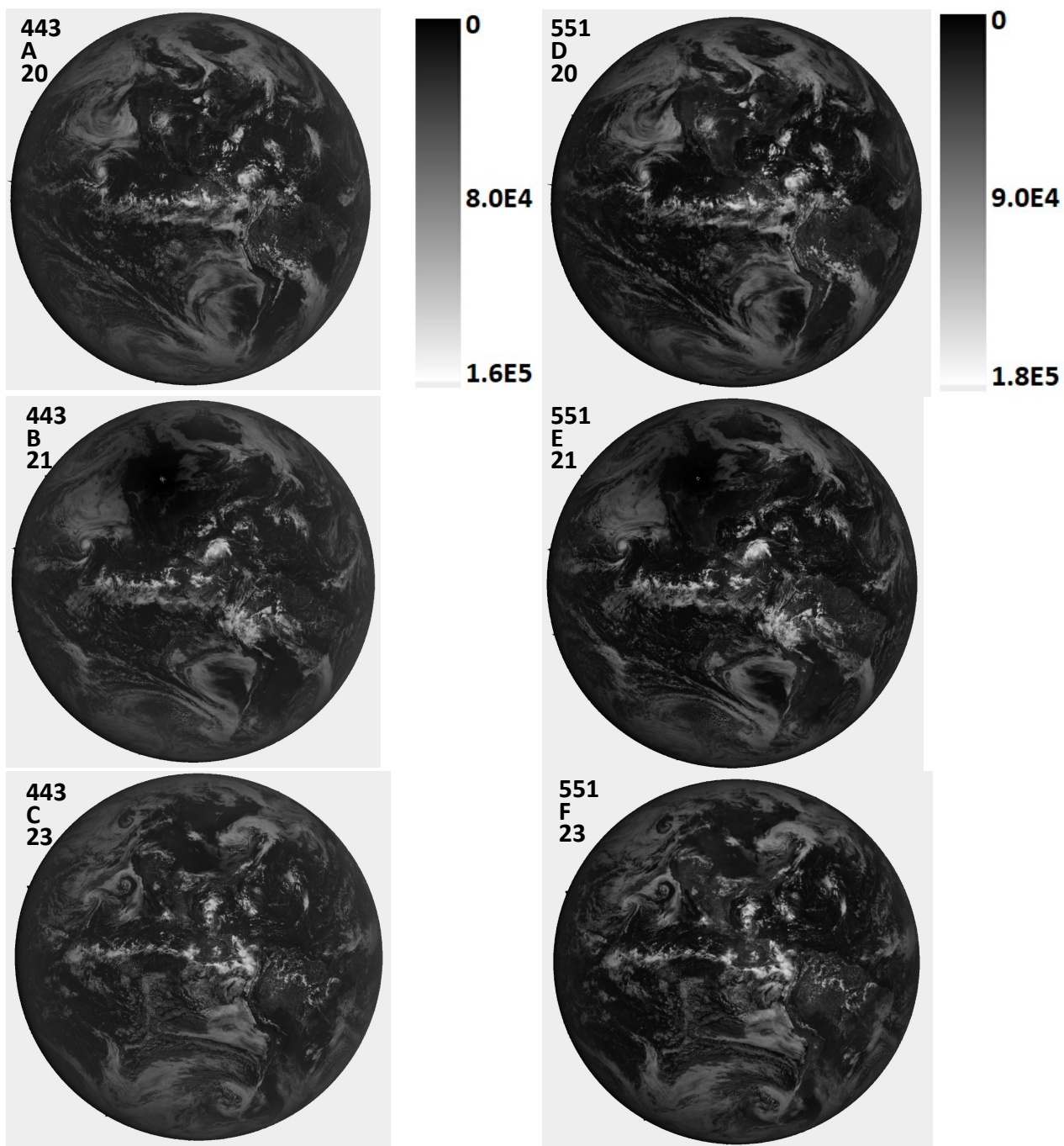


Figure 8a Image in C/s for 443 and 551 nm for 20 Aug. (A+C), 21 Aug. (B+E), and 23 Aug. (C+F). The scale applies to the specific wavelength. North is up.

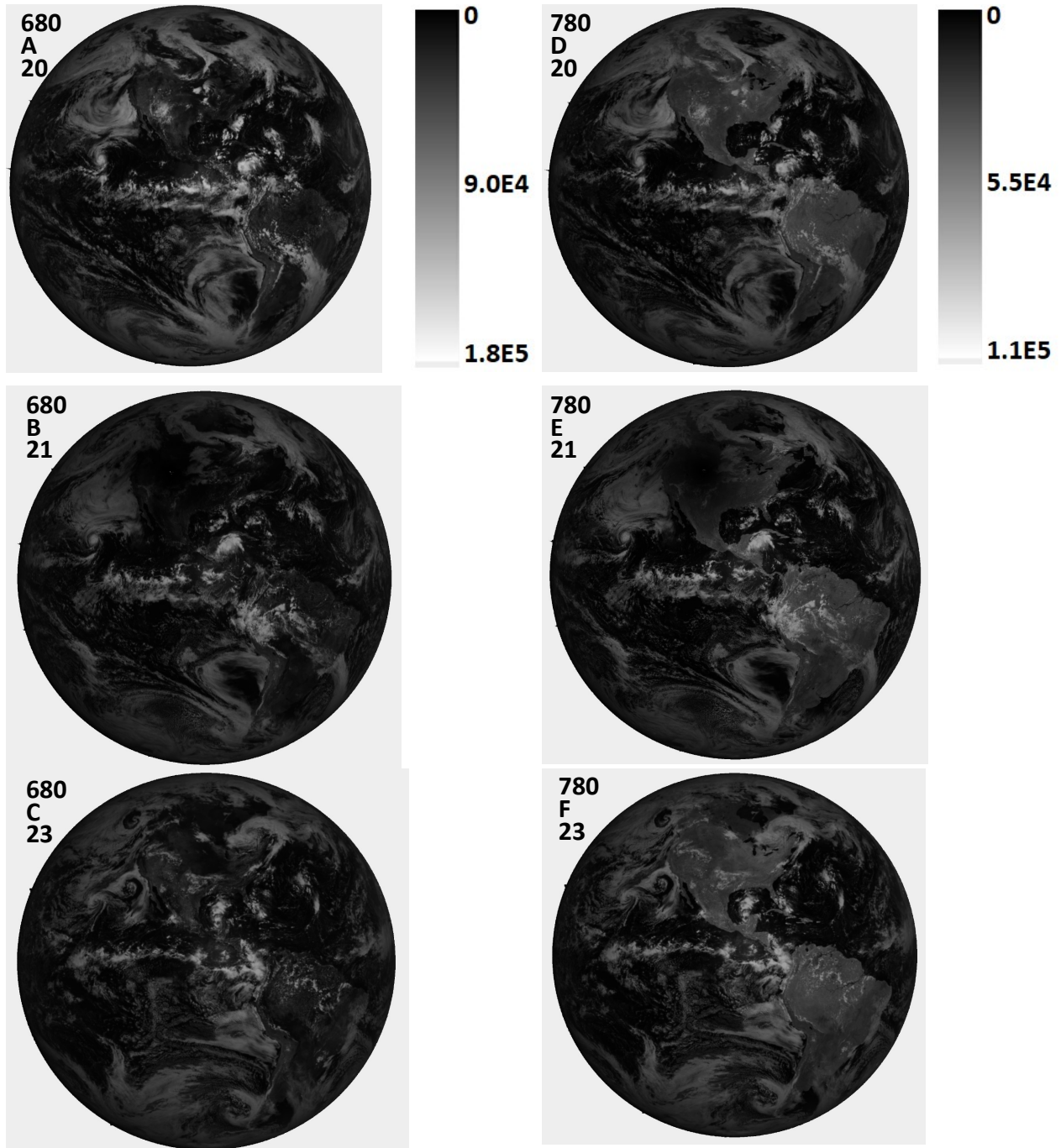


Figure 8b Image in C/s for 680 and 780 nm for 20 Aug. (A+C), 21 Aug. (B+E), and 23 Aug. (C+F). The scale applies to the specific wavelength. North is up.

307

308 EPIC measured $C(\lambda)$ in C/s for each pixel can be converted to Earth top of the atmosphere
 309 reflectance $Re(\lambda)$ using the in-flight derived calibration coefficients $K(\lambda)$, where $Re(\lambda) = K(\lambda) C(\lambda)$. For
 310 the six wavelength channels in Fig. 8 plus the O_2 A- and B-band channels, $K(340) = 1.975 \times 10^{-05}$, $K(388) =$
 311 2.685×10^{-05} , $K(443) = 8.340 \times 10^{-06}$, $K(551) = 6.66 \times 10^{-06}$, $K(680) = 9.30 \times 10^{-06}$, $K(687.75) = 2.02 \times 10^{-05}$, $K(764)$
 312 $= 2.36 \times 10^{-05}$, and $K(780) = 1.435 \times 10^{-05}$ (Herman et al., 2018; Geogdzhayev and Marshak, 2018; Marshak

et al., 2018). To estimate the percent reduction in outgoing radiances, the ratios of integrals over the illuminated CCD for each wavelength channel are formed for nearly the same Earth geometry on days preceding and following the eclipse. Either the integrated reflectances or the integrated $C/s \times 10^{-7}$ (Eqn. 1) for Tables 3A for Casper, Wyoming and 3B for Columbia Missouri) over the CCD pixels, $ICs(\lambda)$, can be used directly, since they are linearly proportional to the integral of the photons received by the illuminated pixels.

Table 3 and Fig. 9 show that the global reduction of backscattered light caused by the eclipse is similar for the two sites even though there is more cloud cover locally over Columbia than Casper. This is because only 30 minutes have elapsed between the two measurements, which is not enough time for the global cloud cover to have significantly changed.

Table 3A Global integral of reflected light ICs for the UTC of the Casper, WY eclipse on 21 August and for the closest solar phase angle from 20 and 23 August. PD is the percent difference caused by the eclipse. Units are $ICs \times 10^{-7}$

λ_i (nm)	20 August 2017 16:58:31 UTC	21 August 2017 17:44:50	23 August 2017 17:54:36	Avg. PD
317.5	280.5	258.8	282.0	9±0.3
325	460.6	425.5	464.2	9±0.4
340	3183	2946	3213	9±0.5
388	2034	1878	2044	9±0.3
443	5808	5344	5813.2	9±0.05
551	5619	5078	5573	10±0.5
680	3790	3433	3773	10±0.3
688	1129	1010	1110	11±0.9
764	671.9	585.9	651.9	13±1.7
780	2794	2491	2799	12±0.1

Table 3B Global integral of reflected light ICs for the UTC of the Columbia, MO eclipse on 21 August and for the closest solar phase angle from 20 and 23 August. PD is the percent difference caused by the eclipse. Units are $ICs \times 10^{-7}$

λ_i (nm)	20 August 2017 18:03:359 GMT	21 August 2017 18:14:50	23 August 2017 17:54:36	Avg. PD
317.5	281.3	258.3	282.0	9±0.1
325	461.6	425.9	464.2	9±0.3
340	3193	2956	3213	8±0.3
388	2034	1884	2044	8±0.3
443	5813.7	5372.3	5813.2	8±0.01
551	5586	5091	5573	10±0.1
680	3790	3453	3773	10±0.2
688	1121	1011	1110	10±0.5
764	661.2	576.0	651.9	14±0.8
780	2794	2475	2799	13±0.1

Figure 9 shows a plot of the data contained in Table 3 based on Eqn. 1. The two non-eclipse days are nearly identical, while the eclipse day (21 Aug) is significantly lower at all wavelengths. The backscattered light (in C/s) peaks near 500 nm and then decreases toward longer wavelengths, since $C(\lambda)$ is proportional to the solar irradiance, which decreases with λ after approximately 550 nm.

$$ICs(\lambda) = \int_0^{2048} \int_0^{2048} C(\lambda, x, y) dx dy \quad (1)$$

over $N_p = 2.59 \times 10^6$ illuminated pixels on 20, 21, 23 August 2017

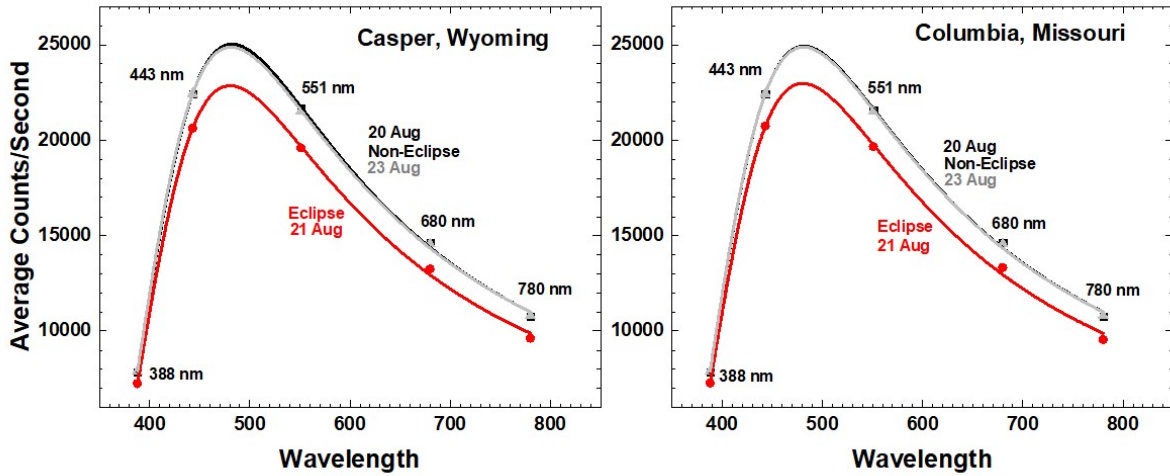


Fig. 9 Average ($ICs(\lambda)/N_p$) reflected light in C/s for eclipse (21 Aug. red) and non-eclipse (20 Aug. and 23 Aug. (black and grey) days from Table 3 and Eqn. 1 for Casper and Columbia. The exact locations of the maxima are from curve fitting to the discrete wavelength measurements.

For the 443 nm channel, the result is an approximate decrease of 9 % on 21 August at 11:44:50 for Casper and 8% at 12:14:50 for Columbia local time. As a reference, we compare two non-eclipse days (19 and 23 August). The relative difference is $(5808-5813)/5813$ 0.1 % for Casper and 0.01 % for Columbia, which is much smaller than the 9 % decrease produced by the eclipse on 21 August. The comparison of the 443 nm eclipse day with two non-eclipse days gives a measure of the uncertainty in the calculation (e.g., 9 ± 0.05 % for Casper and $8 \pm 0.01\%$ for Columbia).

Percent difference $PD(\lambda_i)$ calculations for $\lambda_i = 317.5, 325, 340, 388, 443, 551, 680, 688, 764$, and 780 nm, based on Eqn. 1 are summarized in Table 3A, yielding $PD(\lambda_i) = 9, 9, 9, 9, 9, 9, 10, 10, 13$, and 12 % reductions in backscattered radiances in the direction of L_1 , respectively for Casper with similar values for Columbia. The $PD(764)$ within the strongly absorbing O_2 A-band is 13 % for Casper and 14% for Columbia, even though the reflected $ICs(764)$ is much lower than the surrounding non-absorbed bands. $PD(\lambda_i)$ is smaller at shorter wavelengths because of increased Rayleigh scattering that reduces the contrast of the Moon's shadow by scattering light into the umbra and penumbra regions from the areas adjacent to the total and partial eclipse. The fact that adjacent absorbed and non-absorbed wavelengths

give consistent $PD(\lambda_i)$ suggests that most of the effect comes from clouds and Rayleigh scattering and not from the relatively low reflectivity surface where the amount of clear-sky penetrating radiances are small for 688 and 764 nm channels.

The TOA eclipse measurements made by EPIC are near the backscatter direction (172°) for the incident solar irradiance over nearly cloud-free scenes. For land surfaces, such as the observations made at Casper and Columbia, measurements from the POLDER satellite over China show that the backscatter amount from the land surface increases with increasing wavelength (Maignan et al., 2004). For EPIC data over land that are comparable to the POLDER measurements, the C/s data should be converted to reflectance. When this is done, the wavelength dependence of the EPIC albedo (551, 680, and 780 nm) is similar to POLDER surface reflectance even though there is no EPIC atmospheric correction and there is some cloud cover.

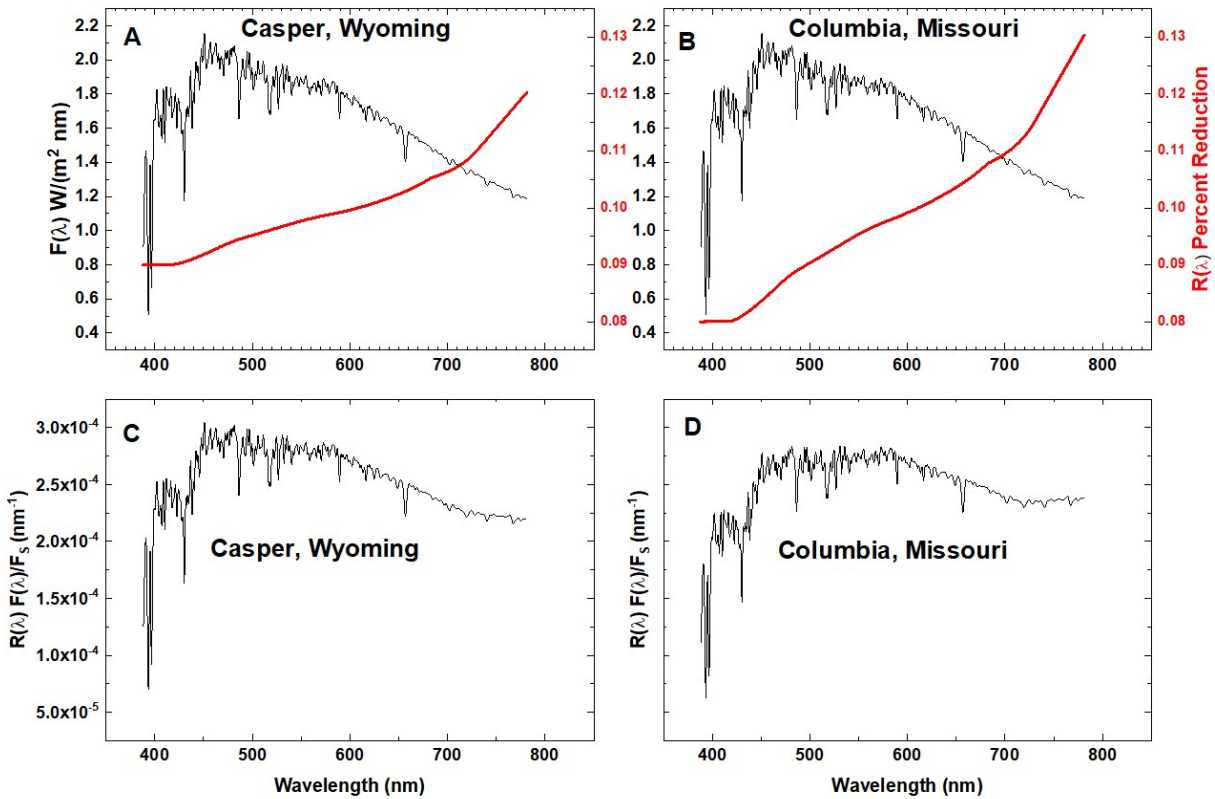


Fig. 10 Solar Irradiance at 1 AU $F(\lambda)$ Watts/(m² nm) (Mayer and Kylling, 2005) and the eclipse reduction function $R(\lambda)$ in percent for Casper, Wyoming (red curve in panel A) and Columbia, Missouri (red curve in panel B). Fractional reduction (nm⁻¹) in reflected solar irradiance in the direction of L-1 for Casper, Wyoming (panel C) and Columbia, Missouri (panel D)

To estimate the fractional reflected radiance reduction for the wavelength range from 388 to 780 nm, a polynomial interpolation $R(\lambda)$ of the Avg. PD in Table 3 for the 5 weakly absorbed channels is formed (Fig. 10 panels A and B red curves). $R(\lambda)$ must be weighted by the solar irradiance spectrum $F(\lambda)$. The solar spectrum used is a combination of measured solar flux data named "atlas_plus_modtran"

in the libRadtran software package (Mayer and Kylling, 2005). The components, F_R and F_S , of the weighted average R are defined in Eqns. 1 and 2. On 21 August 2017 the distance of the Earth from the Sun was 1.011 AU, or $F_S(21 \text{ Aug at } 1 \text{ AU}) = 664.94 \text{ W/m}^2$ and at 1 AU, $F_{R\text{-Casper}} = 66.11 \text{ W/m}^2$ and $F_{R\text{-Columbia}} = 64.86 \text{ W/m}^2$. For the wavelength range of interest (387.9 to 781.25 nm), F_S is about half of the total solar irradiance of 1361 W/m^2 at the top of the atmosphere at 1 AU (Kopp and Lean, 2011), where

$$F_S = \int_{387}^{781} F(\lambda) d\lambda \quad F_R = \int_{387}^{781} R(\lambda) F(\lambda) d\lambda \quad (2)$$

$$\langle R \rangle = \frac{\int_{387}^{781} R(\lambda) F(\lambda) d\lambda}{\int_{387}^{781} F(\lambda) d\lambda} \quad R_{\text{Casper}} = 0.101 \quad (3)$$

$$R_{\text{Columbia}} = 0.098$$

Figure 10b shows the product $R(\lambda)F(\lambda) / F_S$ (nm^{-1}). Forming R shows that during the eclipse the shadow of the Moon reduces the backscattered radiance (388 to 780 nm) from the sunlit Earth in the direction of L_1 by about 10 %. The combined uncertainty ± 0.3 % is caused by variations in the cloud cover of the reference days compared the eclipse day. The calculation of R is based on C/s measurements from DSCOVR/EPIC of the sunlit Earth and the interpolation function $R(\lambda)$. The result is independent of the absolute calibration of EPIC, since it is based on ratios of C/s over three days with approximately the same UTC (scattering phase angles). $R(\lambda)$ includes the near backscatter direction enhanced reflection function appropriate for the entire sunlit disk at a backscatter angle of about 172° . The three days at nearly the same UTC can be compared directly, since EPIC has proven to be very stable based on repeated in-flight calibrations over a 2-year period using OMPS and MODIS (Herman et al., 2018 and Geogdzhayev and Marshak, 2018). The smooth function $R(\lambda)$ does not include absorption features from water and the O_2 A- and B-bands.

3.0 Summary

The EPIC instrument onboard the DSCOVR spacecraft synoptically observes the entire sunlit portion of the Earth from an orbit near the Earth-Sun Lagrange-1 point. On 21 August 2017, EPIC was able to observe the totality shadow from the lunar eclipse of the Sun with the Earth's surface for about 3 hours (seven 10-channel measurements) as it crossed the United States from west to east (about 1.5 hours). When the region of totality was over Casper, Wyoming at 17:44:50 UTC, the reflected 443 nm TOA radiance was reduced to 16 C/s ($8 \times 10^{-5} \text{ W/m}^2 \text{sr}$) in the narrow region of totality compared to a non-eclipse day ($1.52 \times 10^4 \text{ C/s}$ or $0.076 \text{ W/m}^2 \text{sr}$). About 30 minutes later the shadow passed over Columbia, Missouri, but the presence of thin clouds in the vicinity of Columbia caused increased reflected radiance

of 312 C/s (1.6×10^{-3} W/m²sr) during totality compared to Casper. The ratio $R_{EN}(\lambda_i)$ of reflected radiances within the eclipse totality to radiances for the same geometry on adjacent non-eclipse days was measured for all 10 wavelength channels. The measured $R_{EN}(443 \text{ nm})$ was smaller for Columbia (71) than for Casper (936), showing the sensitivity of increased cloud cover over Columbia. Similarly $R_{EN}(388 \text{ nm}, \text{Casper}) = 3500$ and $R_{EN}(388 \text{ nm}, \text{Columbia}) = 81$. While the results cannot be directly compared with R_{EN} , good agreement was obtained (Kazantzidis et al., 2007) between a model study based on a 3D Monte Carlo radiative transfer model (Emde and Mayer, 2007) and measured ratio at 380 nm (ratio = 217) of downward global surface radiation before and during totality. The measured radiance ratios $R_{EN}(\lambda_i)$ can serve as a validation data set for 3D radiative transfer models of the atmosphere that include cloud effects, since EPIC also measures the surrounding amount of cloud cover for the entire sunlit Earth. Comparing $R_{EN}(\lambda, \text{Casper})$ with $R_{EN}(\lambda, \text{Columbia})$ shows that Rayleigh scattering combined with low optical depth clouds can scatter light into the umbra region and reduce $R_{EN}(\lambda)$. Outside of the region of totality, EPIC observed the partial eclipse shadow and the fully illuminated regions of the Earth's disk. Interpolating between the percent reductions in integrated radiances (in C/s) over the sunlit globe, $ICs(\lambda_i)$ for the 5 measured non-absorbed wavelength channels at both locations showed that the integrated reflected radiance from the Earth's sunlit disk towards L_1 decreased by about 10 % compared to the integrated radiances measured on the days before and after the eclipse for approximately the same observing geometry as occurred during the eclipse. Similar calculations comparing two non-eclipse days show smaller changes in ICs (less than 0.1 %) than the eclipse-day change. The five channels that are partially absorbed in the atmosphere give consistent results compared to the non-absorbed channels suggesting that cloud reflectivities dominate the 317.5 to 780 nm radiances reflected back to space from the sunlit Earth's disk with a contribution from Rayleigh scattering for the shorter wavelengths.

Appendix

The course of the eclipse in the vicinity of Casper, Wyoming and Columbia, Missouri is shown in Fig. A1

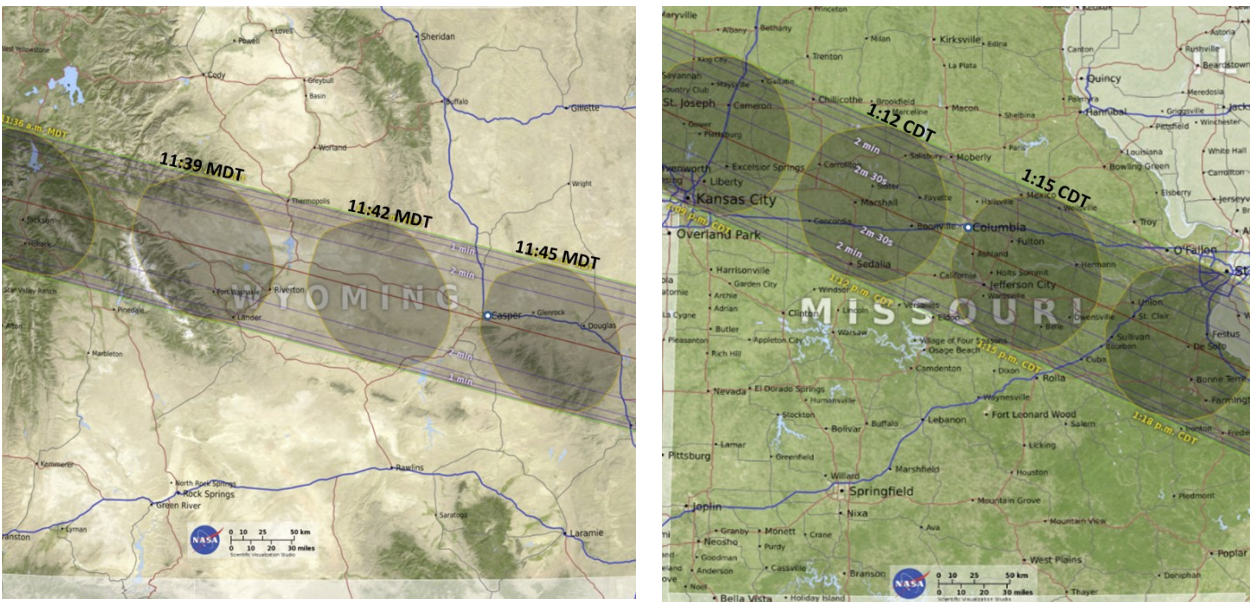


Fig. A1 The timing and shape of the Moon's shadow over Casper, Wyoming showing the relative location of Casper and Columbia (white circles) at 11:45 MDT (Mountain Daylight Time) and 1:15 CDT (Central Daylight Time). The shadow is moving at about 46 km/minute. (<https://eclipse2017.nasa.gov/eclipse-maps>). The NASA scale size is 50 km.

423 Greyscale images for the short UV wavelength channels (317.5, 325) with strong ozone absorption and
 424 Rayleigh scattering, the longer wavelength UV channels (340, 388), and the strongly absorbed O₂ B- and
 425 A-band channels (688, 764 nm) are shown in Figs. A2a, A2b, A2c

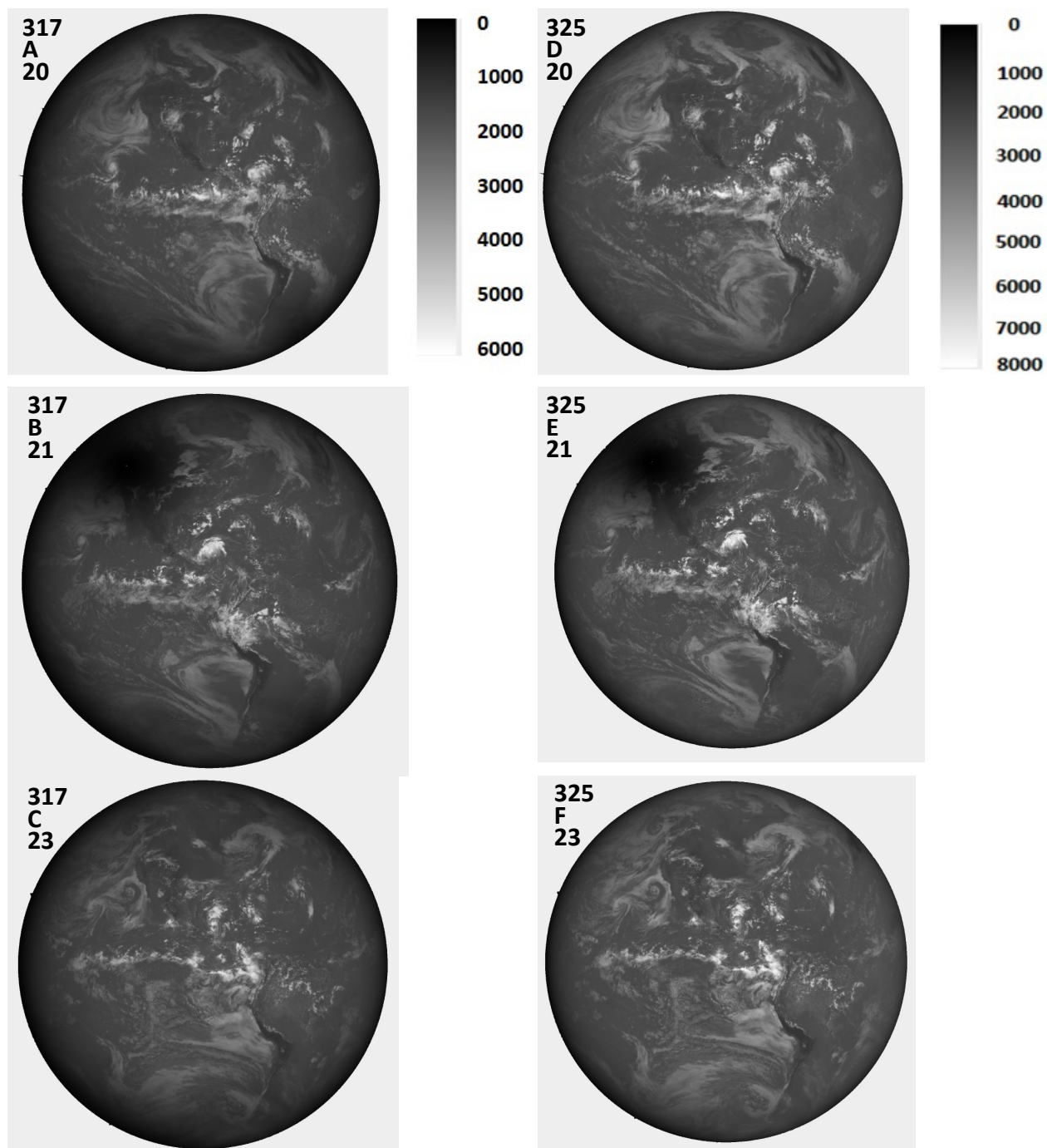


Fig. A2a Image in C/s for 317 and 340 nm for 20 Aug., 21 Aug. and 23 Aug. The scale applies to the specific wavelength. North is up.

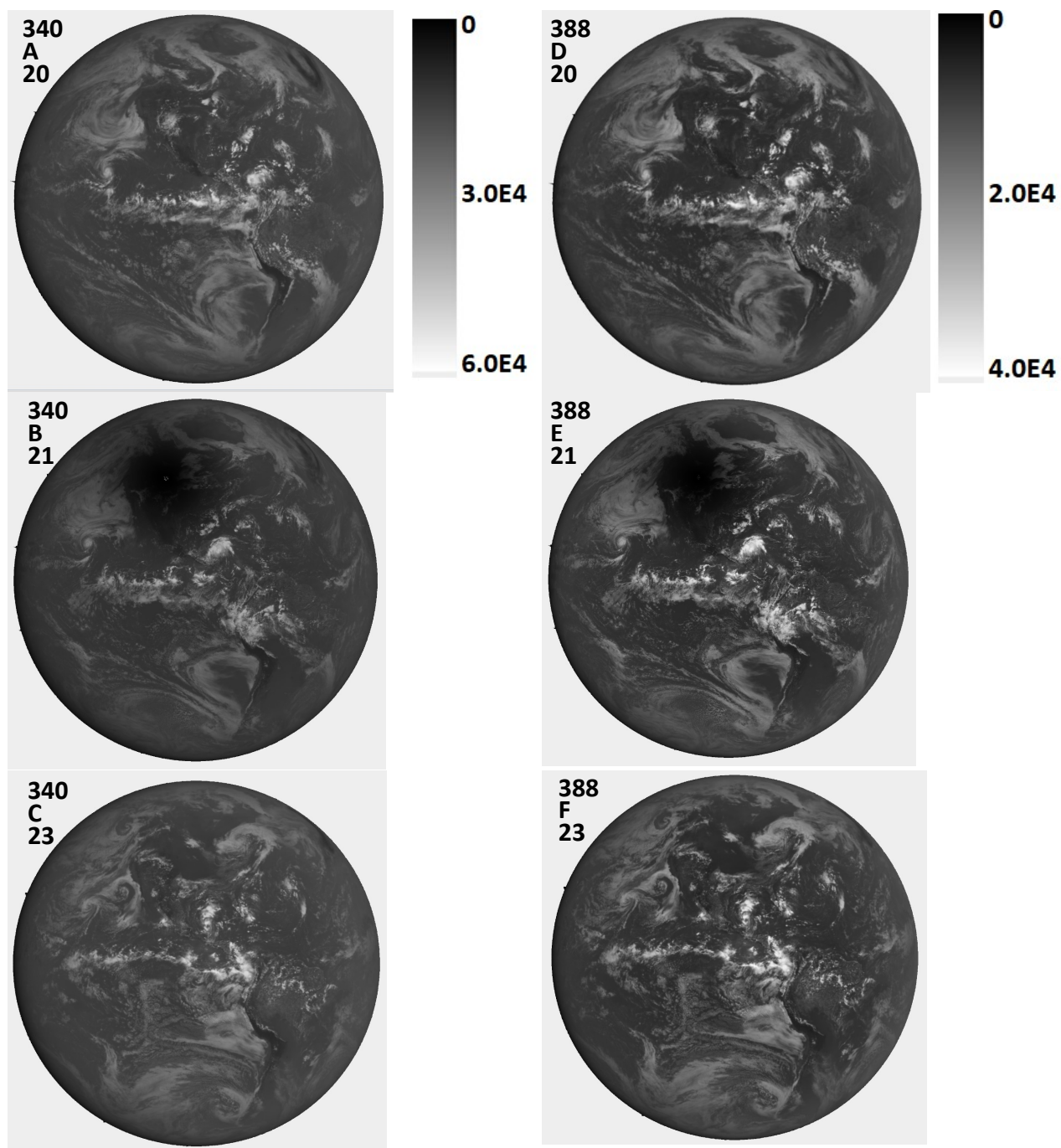


Figure A2b Image in C/s for 340 and 388 nm for 20 Aug.(A+C), 21 Aug. (B+E), and 23 Aug. (C+F). The scale applies to the specific wavelength. North is up.

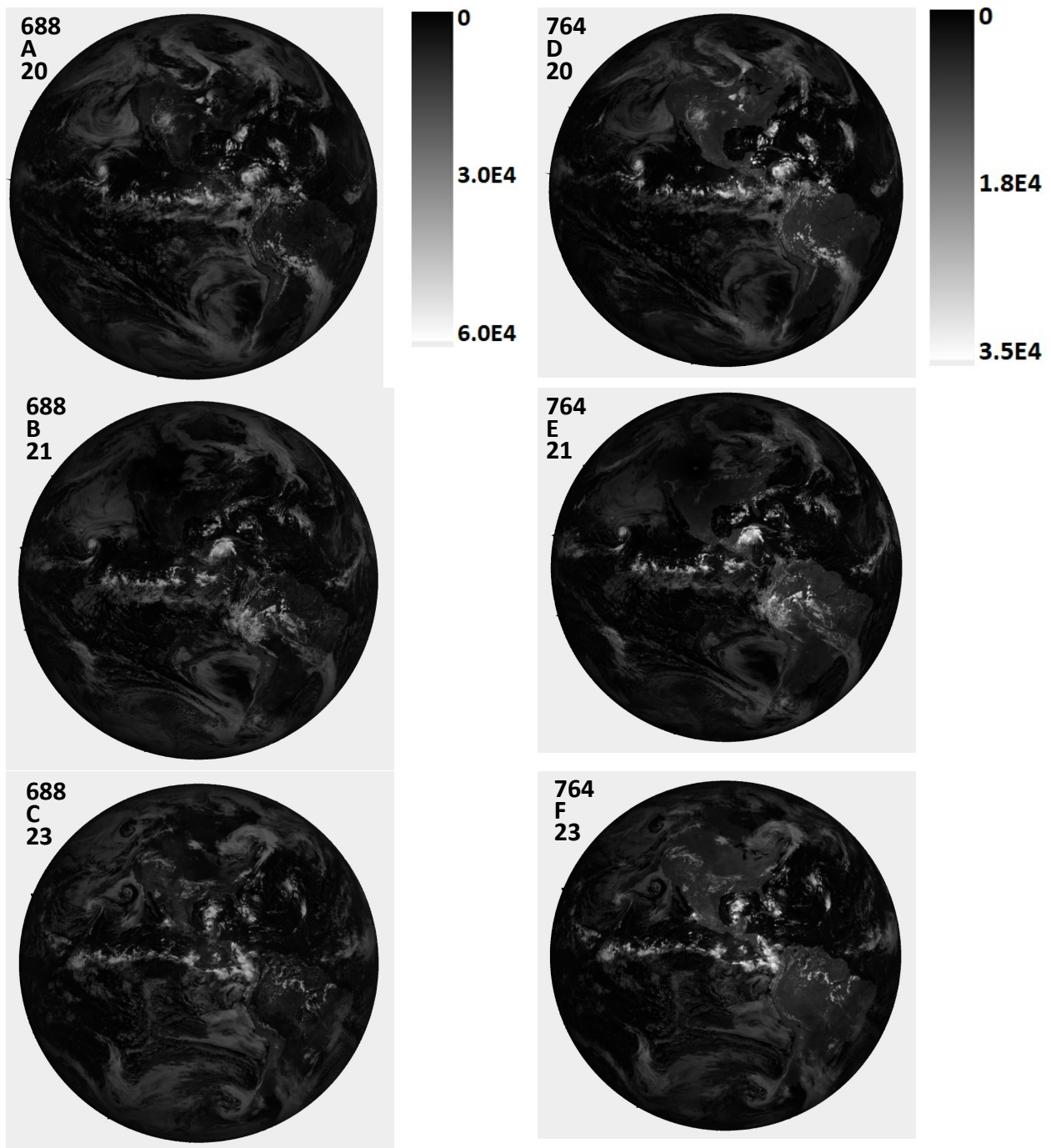


Fig. A2c Image in C/s for 688 and 764 nm for 20 Aug., 21 Aug. and 23 Aug. The scale applies to the specific wavelength. North is up.

429

430 The amount of ozone over the eclipse sites can be derived (Herman et al., 2018) to produce
 431 ozone data that is stored in the NASA-Langley archive. During the eclipse, it is not possible to derive the
 432 amount of ozone from either ground-based or satellite data. Ozone amounts do not change rapidly from
 433 day to day except when major weather systems pass through a region, which was not the case during

the eclipse period, 20 August to 23 August. This is confirmed from OMI satellite data (Ozone Monitoring Instrument onboard the AURA satellite). Figure A3 shows the amount of ozone over the eclipse trajectory obtained on 20 August. The values obtained 316 DU near Casper, WY and 306 DU near Columbia compare well with ozone amounts derived from OMI of 314 DU and 301 DU. The O_3 variability during the 2.7 minutes (approximately 124 km or about 1° of longitude) is about ± 5 DU.

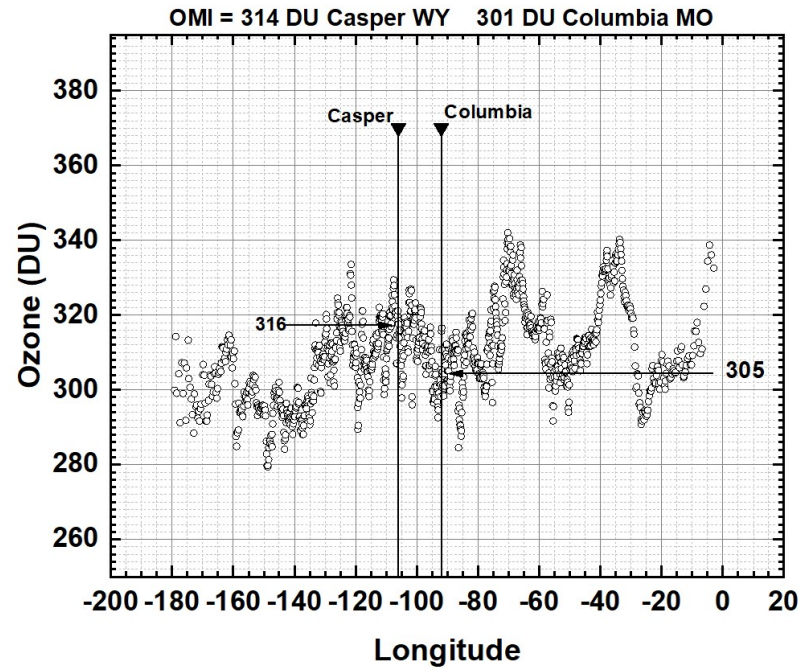


Fig. A3 EPIC measured ozone amounts from 20 August in the vicinity of Casper, WY and Columbia, MO.

442 **4.0 Author Contributions**

443 Jay Herman wrote most of the paper and performed most of the calculations

444 Guoyong Wen is the funded principal investigator of the project.

445 Alexander Marshak provided the calibration coefficients for the visible and near-IR channels

446 Karin Blank provided the color images in Figs. 1 to 3. She was responsible for the geolocation of the 10
447 filter images on a common grid.

448 Liang Huang provided the calibration coefficients for the UV channels

449 Alexander Cede provided the flatfielding, stray light correction, and dark current analysis

450 Nader Abuhassan helped with flatfielding and stray light correction and was responsible for the ground-
451 based portion of this research.

452 Matthew Kowalewski provided the flatfielding, stray light correction, and dark current analysis

453

454

455 The authors declare that they have no conflict of interest.

5.0 References

- Cleveland, William S., LOWESS: A program for smoothing scatterplots by robust locally weighted regression. *The American Statistician*. **35** (1): 54. [JSTOR 2683591](#). [doi:10.2307/2683591](#), 1981.
- Emde, C. and B. Mayer, Simulation of solar radiation during a total eclipse: a challenge for radiative transfer,(2007) *Atmos. Chem. Phys.*, **7**, 2259–2270, 2007.
- Geogdzhayev, I. V. and Marshak, A.: Calibration of the DSCOVR EPIC visible and NIR channels using MODIS Terra and Aqua data and EPIC lunar observations, *Atmos. Meas. Tech.*, **11**, 359–368, <https://doi.org/10.5194/amt-11-359-2018>, 2018.
- Gerasopoulos, E., Zerefos, C. S., Tsagouri, I., Founda, D., Amiridis, V., Bais, A. F., Belehaki, A., Christou, N., Economou, G., Kanakidou, M., Karamanos, A., Petrakis, M., and Zanis, P.: The total solar eclipse of March 2006: overview, *Atmos. Chem. Phys.*, **8**, 5205–5220, <https://doi.org/10.5194/acp-8-5205-2008>, 2008.
- Herman, J.R., Alexander Cede, Elena Spinei, George Mount, Maria Tzortziou, Nader Abuhassan, (2009) NO₂ Column Amounts from Ground-based Pandora and MFDOAS Spectrometers using the Direct-Sun DOAS Technique: Intercomparisons and Application to OMI Validation, *J. Geophys. Res.*, **114**, D13307, [doi:10.1029/2009JD011848](#), 2009.
- Herman, J.R., R.D. Evans, A. Cede, N.K. Abuhassan, I. Petropavlovskikh, and G. McConville, (2015) Comparison of Ozone Retrievals from the Pandora Spectrometer System and Dobson Spectrophotometer in Boulder Colorado, *Atmos. Meas. Tech.*, **8**, 3407–3418, 2015 [doi:10.5194/amt-8-3407-2015](#)
- Herman, Jay, Liang Huang, Richard McPeters, Jerry Ziemke, Alexander Cede, and Karin Blank, Synoptic ozone, cloud reflectivity, and erythral irradiance from sunrise to sunset for the whole earth as viewed by the DSCOVR spacecraft from the earth–sun Lagrange 1 orbit, 2017, *Atmos. Meas. Tech.*, **10**, 1–18, <https://doi.org/10.5194/amt-10-1-2017>.
- Ji, Q. and S.-C. Tsay (2000) On the dome effect of Eppley pyrgeometers and pyranometers, *Geophys. Res. Lett.* **27**:971–974.
- Kazantzidis, A., Bais, A. F., Emde, C., Kazadzis, S., and Zerefos, C. S.: Attenuation of global ultraviolet and visible irradiance over Greece during the total solar eclipse of 29 March 2006, *Atmos. Chem. Phys.*, **7**, 5959–5969, <https://doi.org/10.5194/acp-7-5959-2007>, 2007.
- Kopp, G.; Lean, J. L., (2011), A new, lower value of total solar irradiance: Evidence and climate significance, *Geophysical Research Letters*. **38**.
- Littmann, Mark; Espenak, Fred; **Wilcox**, Ken (2008). *Totality: Eclipses of the Sun*. Oxford University Press. pp. 18–19. ISBN 0-19-953209-5.
- Liendo, J.A. and G.H. Chacin, (2004), A study of a solar eclipse using a photocell, *Revista Brasileira de Ensino de Fisica*, v. **26**, 395 – 399.

Maignan, F., Breon, F. M., and Lacaze, R., (2004), Bidirectional reflectance of Earth targets: Evaluation of analytical models using a large set of spaceborne measurements with emphasis on the Hot Spot, *Remote Sens. Environ.*, 90, 210–220, doi:10.1016/j.rse.2003.12.006.

Marshak, Alexander, Jay R. Herman, Adam Szabo, Karin B. Blank, Alexander Cede, Simon A. Carn, Igor V. Geogdzhayev, Dong Huang, Liang-Kang Huang, Yuri Knyazikhin, Matthew G. Kowalewski, Nickolay A. Krotkov, Alexei I. Lyapustin, Richard D. McPeters, Omar O. Torres and Yuekui Yang, Earth Observations from DSCOVR/EPIC Instrument, BAMS, accepted, 2018

Mayer, B. and Kylling, (2005) A.: Technical Note: The libRadtran software package for radiative transfer calculations: Description and examples of use, *Atmos. Chem. Phys.*, 5, 1855–1877, <http://www.atmos-chem-phys.net/5/1855/2005/>.

Meeus, J. (2003). "The maximum possible duration of a total solar eclipse". *Journal of the British Astronomical Association*. **113** (6): 343–48.

Psiloglou, B.E. and H. D. Kambezidis, Performance of the meteorological radiation model during the solar eclipse of 29 March 2006, *Atmos. Chem. Phys.*, 7, 6047–6059, 2007.

Wen, G., A. Marshak, and R.F. Cahalan, (2008) Importance of molecular Rayleigh scattering in the enhancement of clear sky radiance in the vicinity of boundary layer cumulus clouds. *J. Geophys. Res.*, 113: [10.1029/2008JD010592].

Acknowledgement

The author would like to thank the DSCOVR project for support in completing this study as well as financial support from an accepted NASA-ROSES proposal in response to NNH16ZDA001N-ISE. All data is from the permanent NASA data repository:

https://eosweb.larc.nasa.gov/project/dscovr/dscovr_epic_l1b.

520 **Tables**

521

Table 1 *Eclipse Measurement Timing and Location Details for 5 Wavelengths*

Eclipse Maximum and EPIC Image Times. Total Measurement Duration 2.7 minutes

Wavelength (nm)	Date and Time	Location Name	Longitude
	2017-08-21 17:35:40	Eclipse West Edge of WY state	-111 ⁰ 02'
551	2017-08-21 17:42:36	West of Casper	-106 ⁰ 22'
680	2017-08-21 17:43:30	West of Casper	-106 ⁰ 21'
Casper Wyoming	2017-08-21 17:43:51	Casper WY	-106 ⁰ 19'
780	2017-08-21 17:44:24	Near Glenrock WY	-105 ⁰ 52'
443	2017-08-21 17:44:50	West of Douglas WY	-105 ⁰ 14'
388	2017-08-21 17:45:18	West of Douglas WY	-105 ⁰ 17'
	2017-08-21 17:48:04	Eclipse East Edge of WY state	-104 ⁰ 03'

522

523

524

Table 2 *Radiance Ratio $R_{EN}(\lambda_i)$ during eclipse totality 17:45 UTC compared to 20 Aug*

Wavelength λ_i (nm)	Max. $R_{EN}(\lambda_i)$ C/s
317.5	118
325	68.2
340	144
388	86
443	122
551	119.5
680	80
688	38
764	108
780	112.5

525

526

527

528

529

530

531

532

Table 3A Eclipse change in reflected light at Casper, WY from 20, 21, 23 August 2017 Units are ICs x 10⁻⁷

λ_i (nm)	20 August 2017 16:58:31 GMT	21 August 2017 17:44:50	23 August 2017 17:54:36	Avg. PD
317.5	280.5	258.8	282.0	9±0.3
325	460.6	425.5	464.2	9±0.4
340	3183	2946	3213	9±0.5
388	2034	1878	2044	9±0.3
443	5808	5344	5813.2	9±0.05
551	5619	5078	5573	10±0.5
680	3790	3433	3773	10±0.3
688	1129	1010	1110	11±0.9
764	671.9	585.9	651.9	13±1.7
780	2794	2491	2799	12±0.1

533

Table 3B Eclipse change in reflected light at Columbia, MO from 20, 21, 23 August 2017 Units are ICs x 10⁻⁷

λ_i (nm)	20 August 2017 18:03:359 GMT	21 August 2017 18:14:50	23 August 2017 17:54:36	Avg. PD
317.5	281.3	258.3	282.0	9±0.1
325	461.6	425.9	464.2	9±0.3
340	3193	2956	3213	8±0.3
388	2034	1884	2044	8±0.3
443	5813.7	5372.3	5813.2	8±0.01
551	5586	5091	5573	10±0.1
680	3790	3453	3773	10±0.2
688	1121	1011	1110	10±0.5
764	661.2	576.0	651.9	14±0.8
780	2794	2475	2799	13±0.1

534

535

536

537

Figure Captions

Fig. 1 Synoptic view of the sunlit Earth perturbed by the 21 August 2017 total eclipse centered over Casper, Wyoming at 17:44:50 UTC. The black region is the eclipse umbra centered over Casper, WY. The color image has been adjusted from the images on <https://epic.gsfc.nasa.gov/> by increasing the gamma correction to bring out the region of totality and surrounding clouds.

Fig. 2 Synoptic view of the total eclipse centered over Columbia, Missouri at 18:14:50 UTC. The black region is the eclipse umbra centered over Casper, WY. The color image has been adjusted from the images on <https://epic.gsfc.nasa.gov/> by increasing the gamma correction to bring out the region of totality and surrounding clouds.

Fig. 3 Greyscale images for 6 of the DSCOVR/EPIC channels for the eclipse over Casper Wyoming showing the blurring caused by Rayleigh scattering and the dark land and ocean surfaces at 340 nm to the almost clear atmosphere and bright continental surfaces at 780 nm. The images were obtained over a period of 2.7 minutes. North is facing down.

Fig. 4 Panel A: Synoptic natural color images on 21 August at 16:14 and 19:44 before and after the eclipse over the US, and Panel B: the days before and after the eclipse selected to be as close as possible to the phase angle (UTC 17:44:50) as the time of totality over Casper, Wyoming. North is facing up.

Fig. 5 Top: The effect of an eclipse (21 Aug) on the measured C/s reflected back to space as a function of longitude (degrees) for two locations, Casper Wyoming (left) and Columbia Missouri (right). Bottom: Measured C/s reflected back to space on 20 Aug. A \log_{10} scale is used to show details of the spatial variability mostly caused by clouds

Figure . The ratio $R_{EN}(\lambda_i) = I(\text{Aug20})/I(\text{Aug21})$ at the time of the Eclipse in Casper Wyoming for wavelengths 317.5 to 780 nm. The channels 317.5 to 240 nm are affected by ozone absorption and the channels 688 and 764 nm are within the O_2 B and A absorption bands.

Fig. 6b The ratio $R_{EN}(\lambda_i) = I(\text{Aug20})/I(\text{Aug21})$ at the time of the Eclipse in Columbia, Missouri for wavelengths 317.5 to 780 nm. The channels 317.5 to 340 nm are affected by ozone absorption and the channels 688 and 764 nm are within the O_2 B and A absorption bands.

Fig. 7 The C/s observed by EPIC for the 443 nm channel corresponding to the color image shown in Fig. 1. In the data file, the word infinity has been replaced by the number zero. In this image there are approximately $N_p = 2.59 \times 10^6$ illuminated pixels out of $2048^2 = 4.194304 \times 10^6$ pixels (61.8 %).

Fig. 8a Figure 8b Image in C/s for 443 and 551 nm for 20 Aug.(A+C), 21 Aug. (B+E), and 23 Aug. (C+F). The scale applies to the specific wavelength. North is up.

Fig. 8b Figure 8c Image in C/s for 680 and 780 nm for 20 Aug.(A+C), 21 Aug. (B+E), and 23 Aug. (C+F). The scale applies to the specific wavelength. North is up

571 Fig. 9 Average reflected light in C/s for eclipse (21 Aug. red) and non-eclipse (20 Aug. and 23 Aug. (black
572 and grey) days from Table 3 and Eqn. 1 for Casper and Columbia. The locations of the maxima are from
573 curve fitting to the discrete wavelength measurements.

574 Fig. 10 Solar Irradiance at 1 AU $F(\lambda)$ Watts/(m² nm) (Mayer and Kylling, 2005) and the eclipse reduction
575 function $R(\lambda)$ in percent for Casper, Wyoming (red curve in panel A) and Columbia, Missouri (red curve
576 in panel B). Fractional reduction (nm⁻¹) in reflected solar irradiance in the direction of L-1 for Casper,
577 Wyoming (panel C) and Columbia, Missouri (panel D)

578 Fig. A1 The timing and shape of the Moon's shadow over Casper, Wyoming showing the relative location
579 of Casper and Columbia (white circles) at 11:45 MDT (Mountain Daylight Time) and 1:15 CDT (Central
580 Daylight Time). The shadow is moving at about 46 km/minute. ([https://eclipse2017.nasa.gov/eclipse-
581 maps](https://eclipse2017.nasa.gov/eclipse-

581 maps)). The NASA scale size is 50 km.

582 Fig. A2a Image in C/s for 317 and 340 nm for 20 Aug., 21 Aug. and 23 Aug. The scale applies to the
583 specific wavelength. North is up.

584 Fig. A2b Image in C/s for 340 and 388 nm for 20 Aug.(A+C), 21 Aug. (B+E), and 23 Aug. (C+F). The scale
585 applies to the specific wavelength. North is up.

586 Fig. A2c A2c Image in C/s for 688 and 764 nm for 20 Aug., 21 Aug. and 23 Aug. The scale applies to the
587 specific wavelength. North is up.

588 Fig. A3 EPIC measured ozone amounts from 20 August in the vicinity of Casper, WY and Columbia, MO.

589

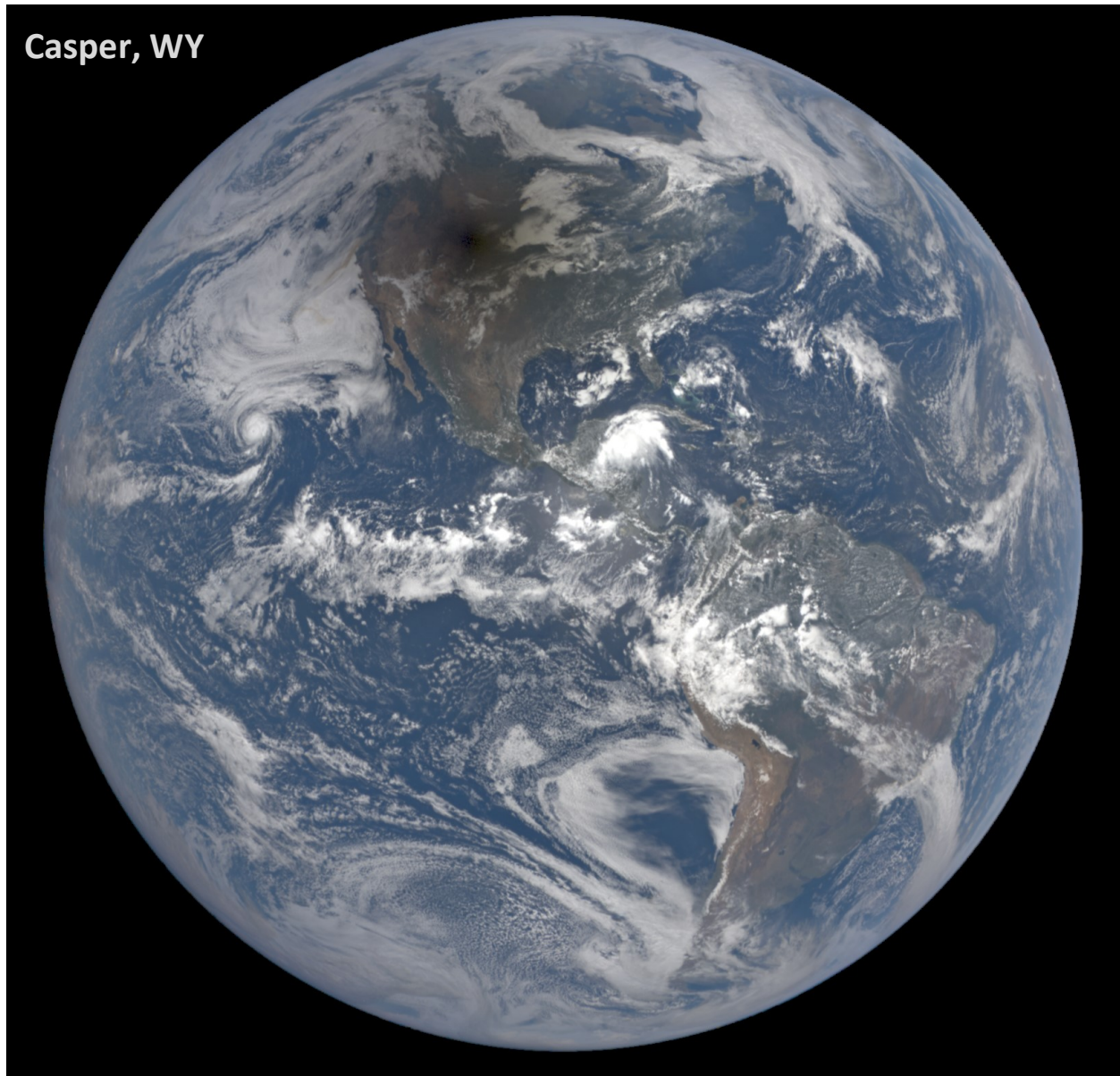


Fig. 1 Synoptic view of the sunlit Earth perturbed by the 21 August 2017 total eclipse centered over Casper, Wyoming at 17:44:50 UTC. The black region is the eclipse umbra centered over Casper, WY. The color image has been adjusted from the images on <https://epic.gsfc.nasa.gov/> by increasing the gamma correction to bring out the region of totality and surrounding clouds.

590

591

592 **F01**

593

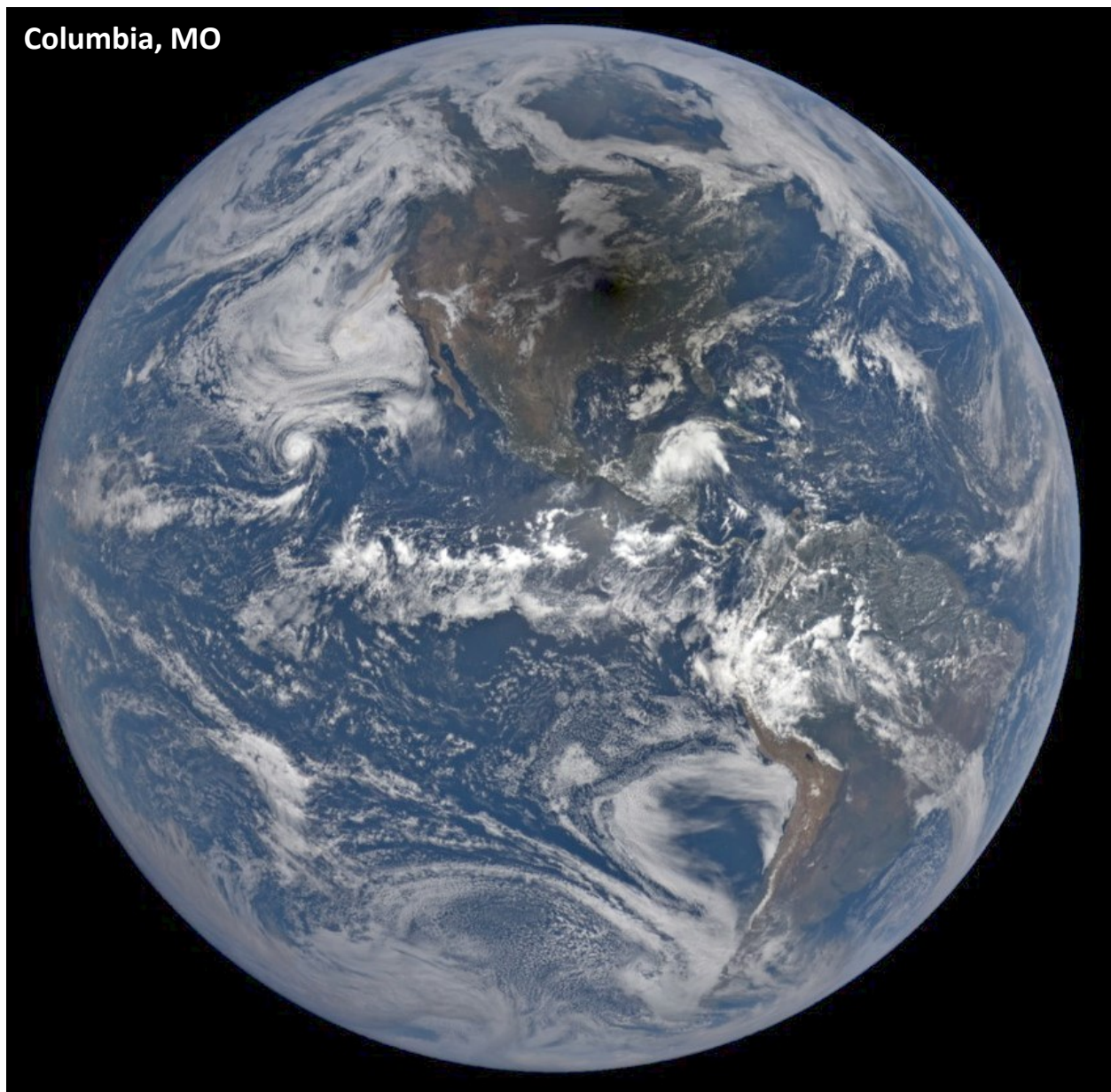


Fig. 2 Synoptic view of the total eclipse centered over Columbia, Missouri at 18:14:50 UTC. The black region is the eclipse umbra centered over Casper, WY. The color image has been adjusted from the images on <https://epic.gsfc.nasa.gov/> by increasing the gamma correction to bring out the region of totality and surrounding clouds.

594

595

596 **F02**

597

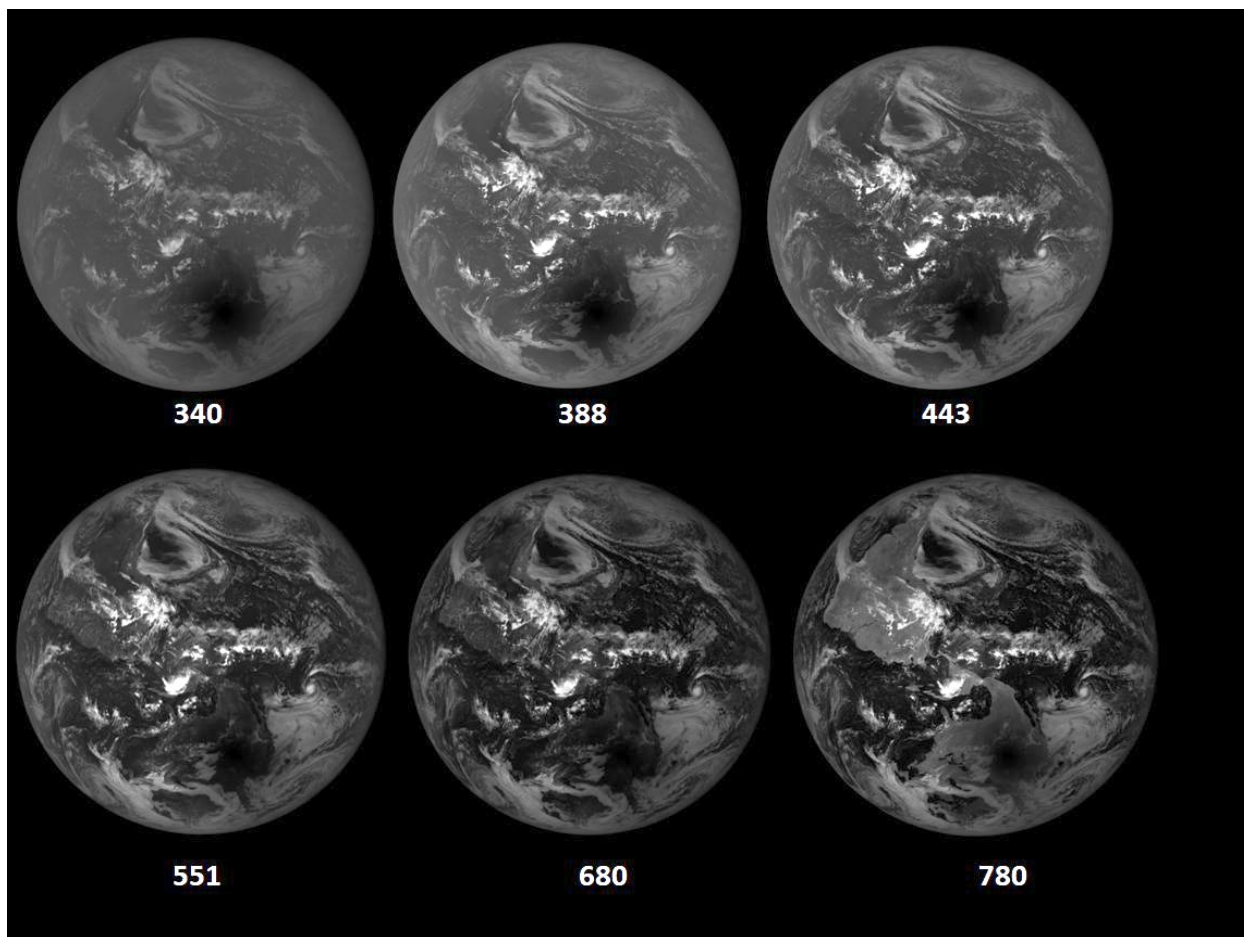


Fig. 3 Greyscale images for 6 of the DSCOVR/EPIC channels for the eclipse over Casper Wyoming showing the blurring caused by Rayleigh scattering and the dark land and ocean surfaces at 340 nm to the almost clear atmosphere and bright continental surfaces at 780 nm. The images were obtained over a period of 2.7 minutes. North is facing down.

598

599

600 **F03**

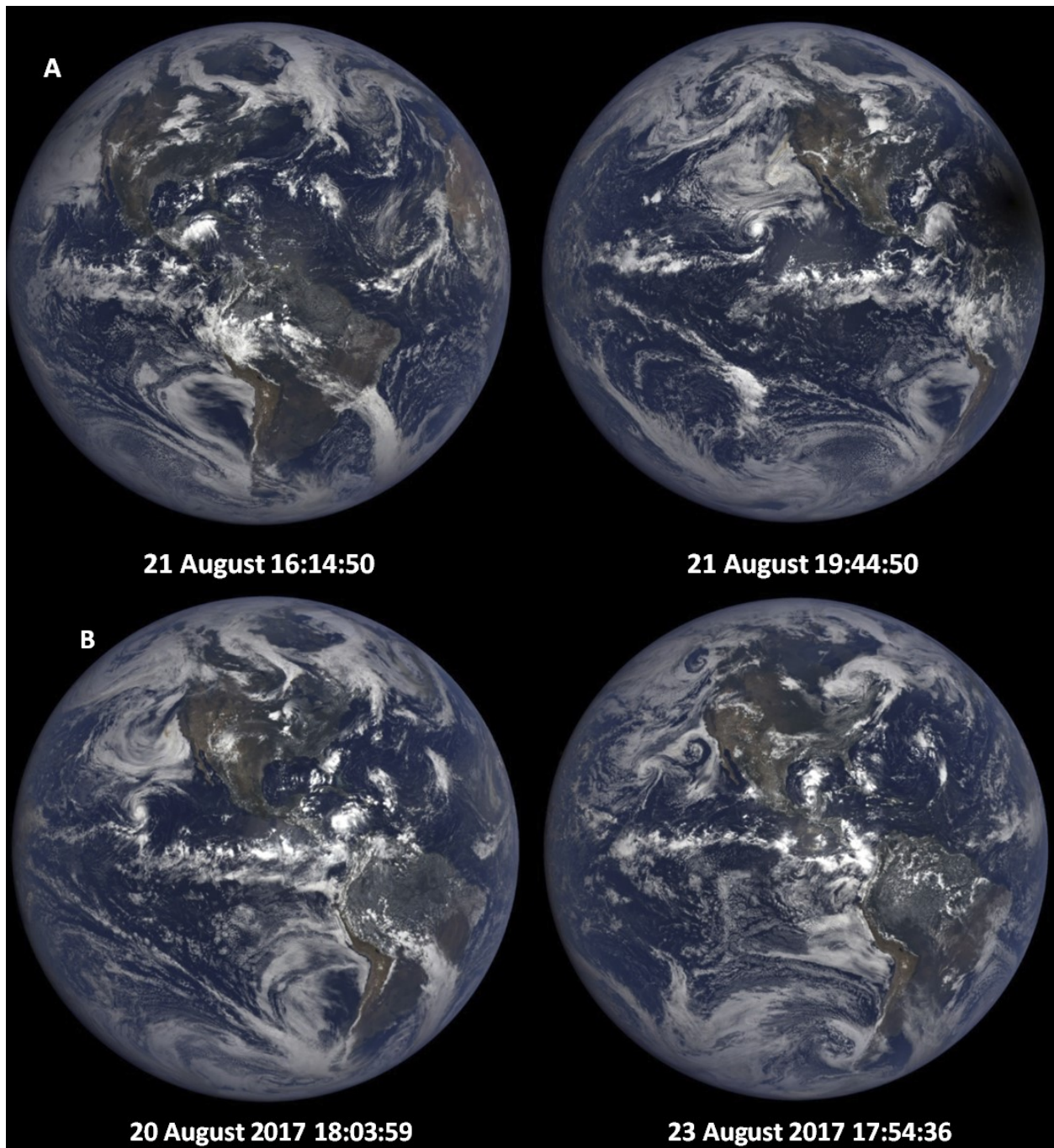


Fig. 4 Panel A: Synoptic natural color images on 21 August at 16:14 and 19:44 before and after the eclipse over the US, and Panel B: the days before and after the eclipse selected to be as close as possible to the phase angle (UTC 17:44:50) as the time of totality over Casper, Wyoming. North is facing up.

601

602 **F04**

603

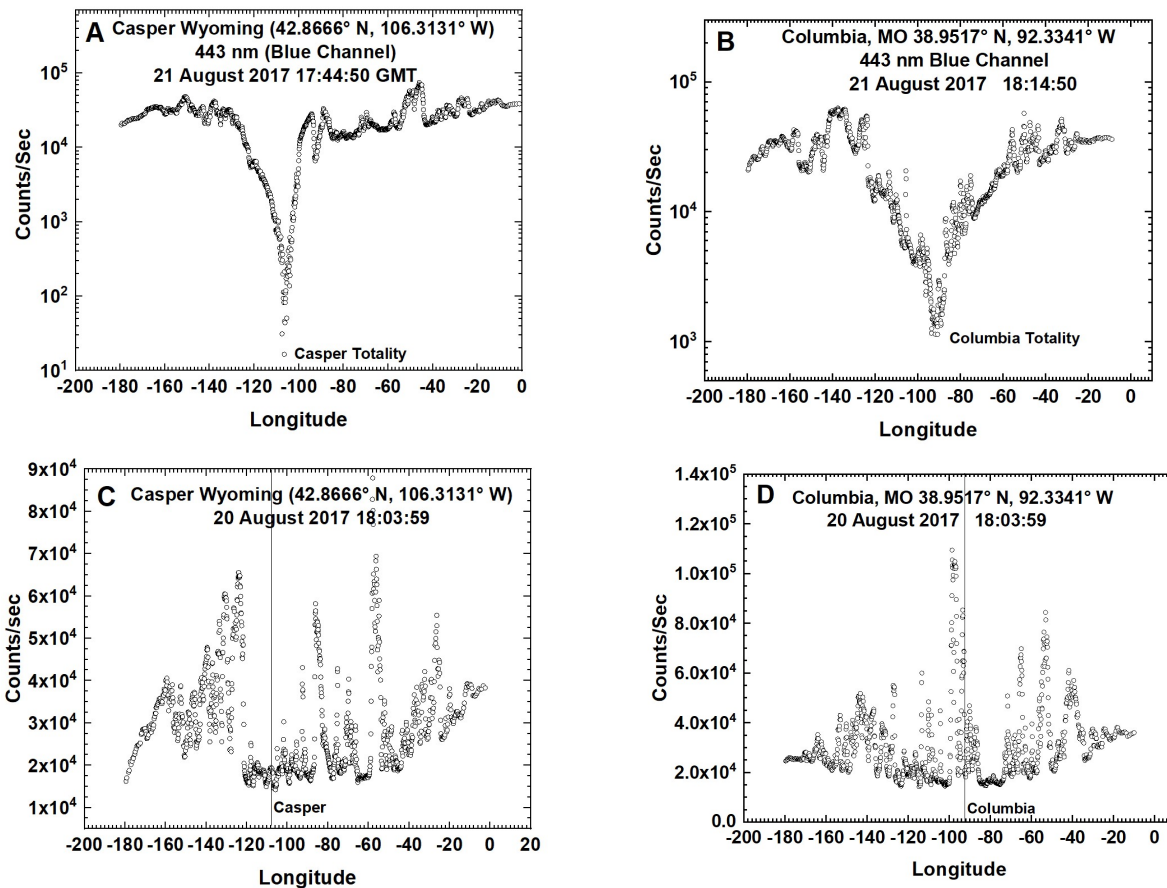
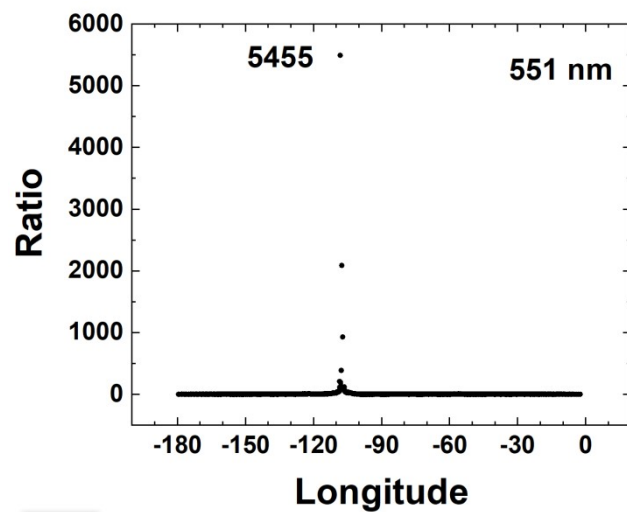
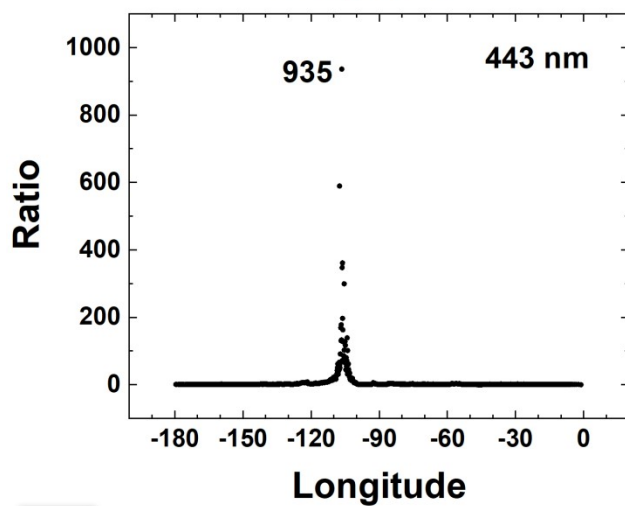
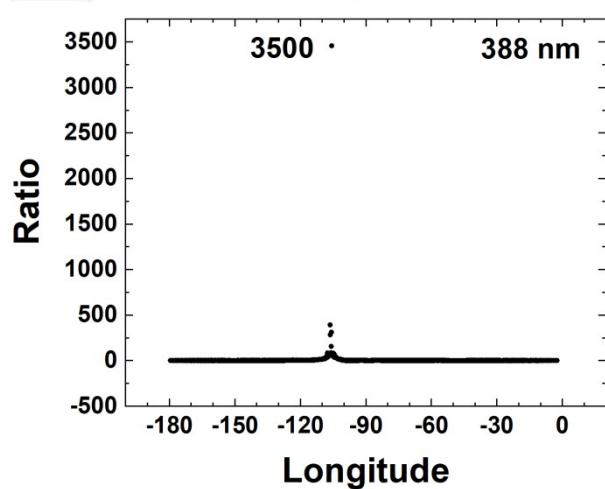
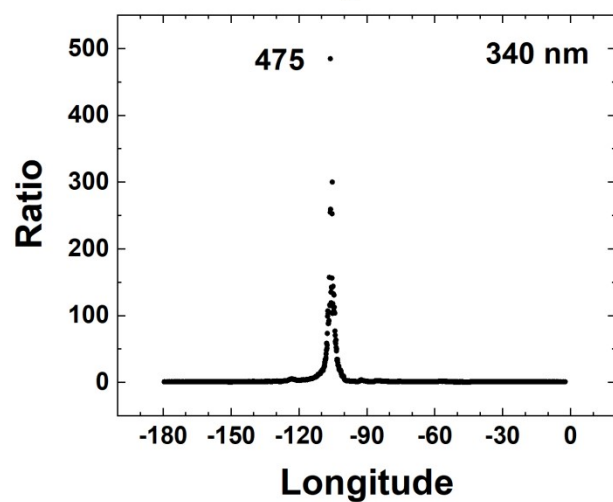
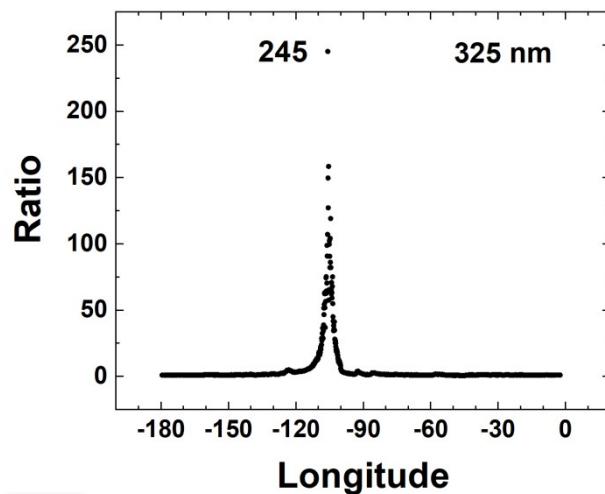
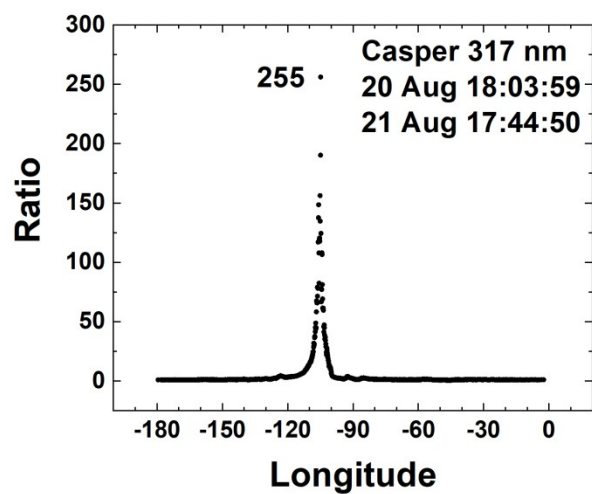


Fig. 5 Top: The effect of an eclipse (21 Aug) on the measured C/s reflected back to space as a function of longitude (degrees) for two locations, Casper Wyoming (left) and Columbia Missouri (right). Middle: Measured C/s reflected back to space on 20 Aug.

F05



608

609 **F06a**

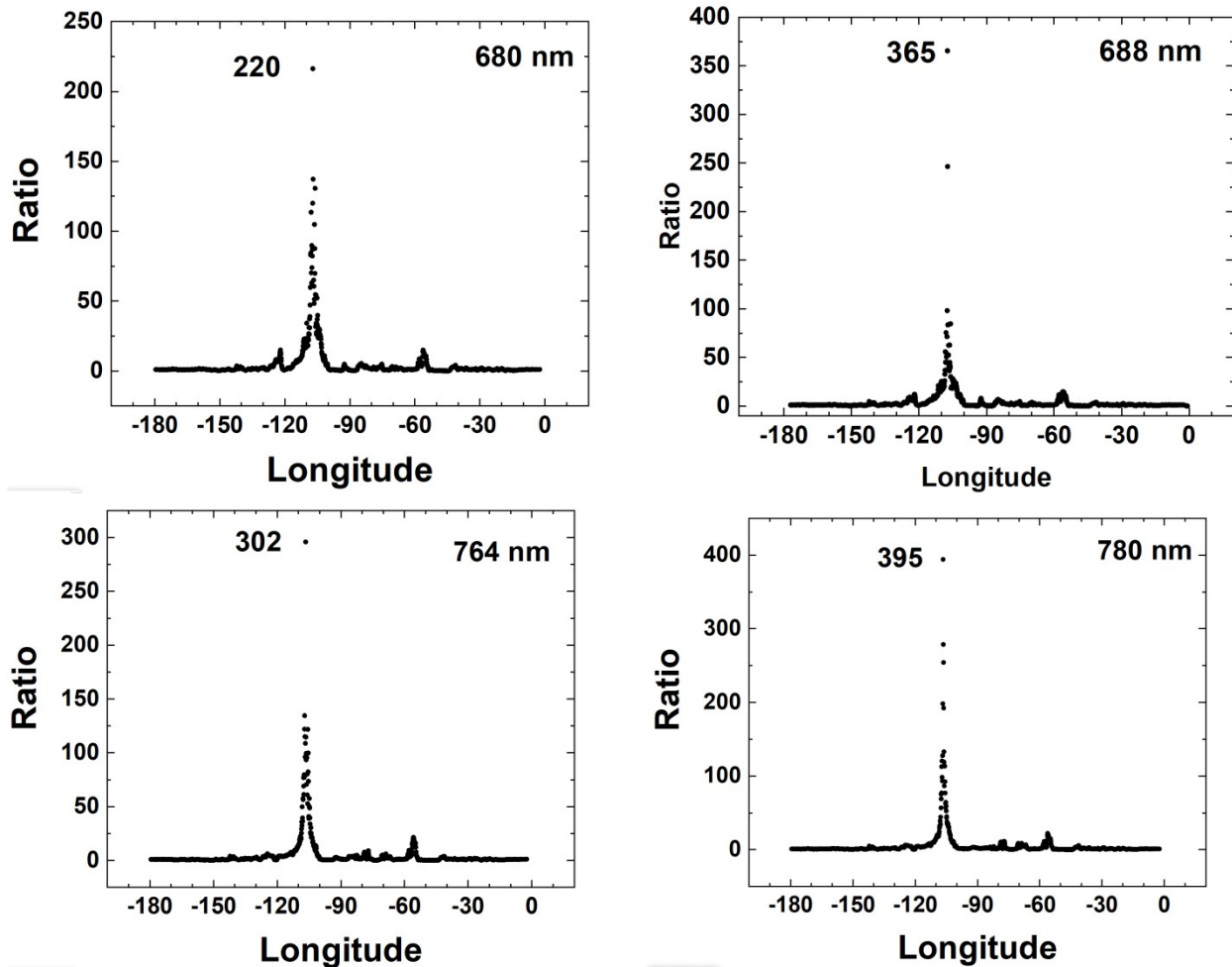
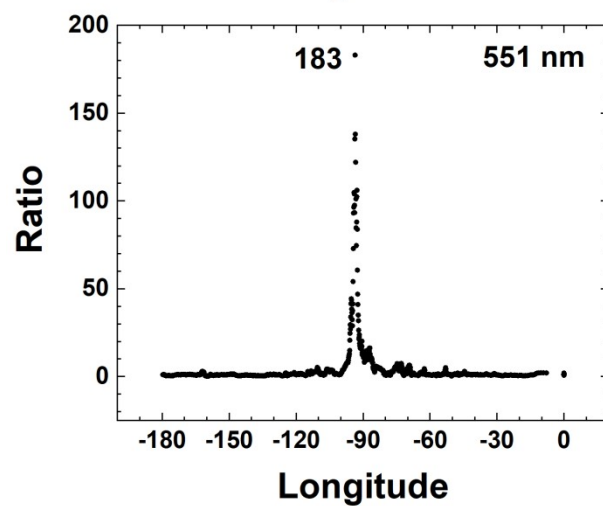
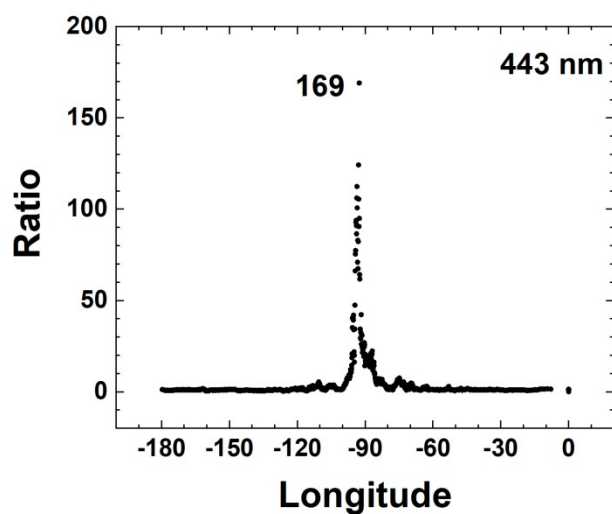
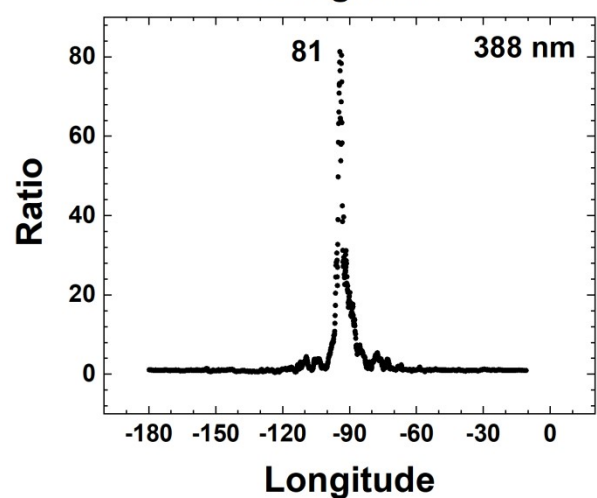
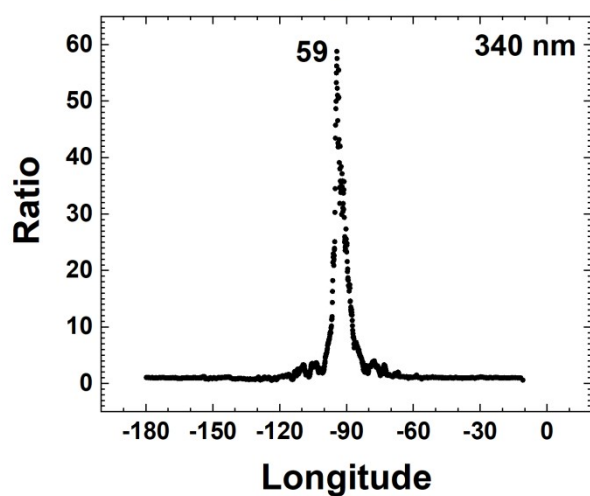
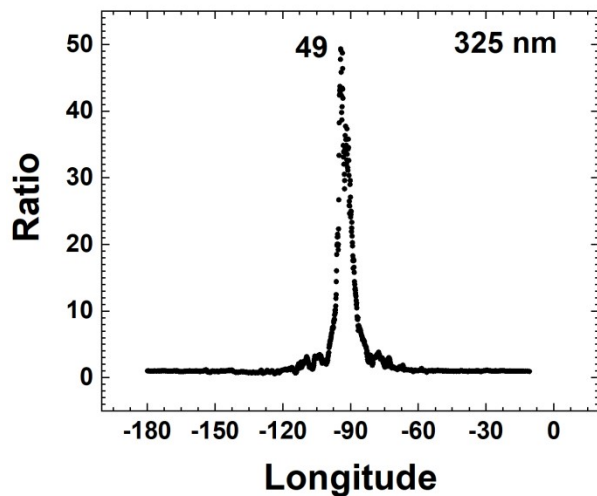
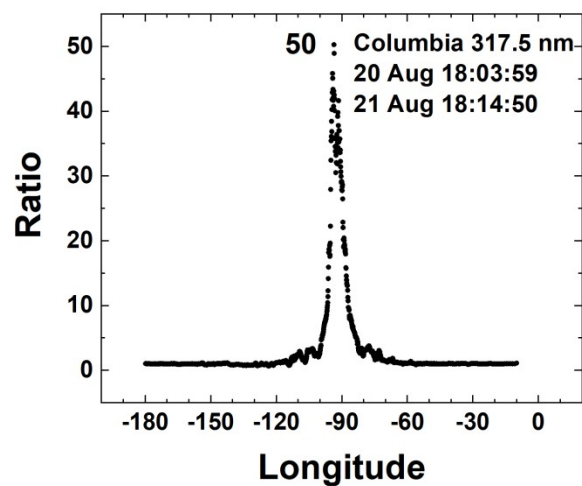


Fig. 6a. The ratio $R_{EN}(\lambda_i) = I(\text{Aug20})/I(\text{Aug21})$ at the time of the Eclipse in Casper Wyoming for wavelengths 317.5 to 780 nm. The channels 317.5 to 240 nm are affected by ozone absorption and the channels 688 and 764 nm are within the O_2 B and A absorption bands.

610

611

612 **F06a Continued**



613

614 **F06b**

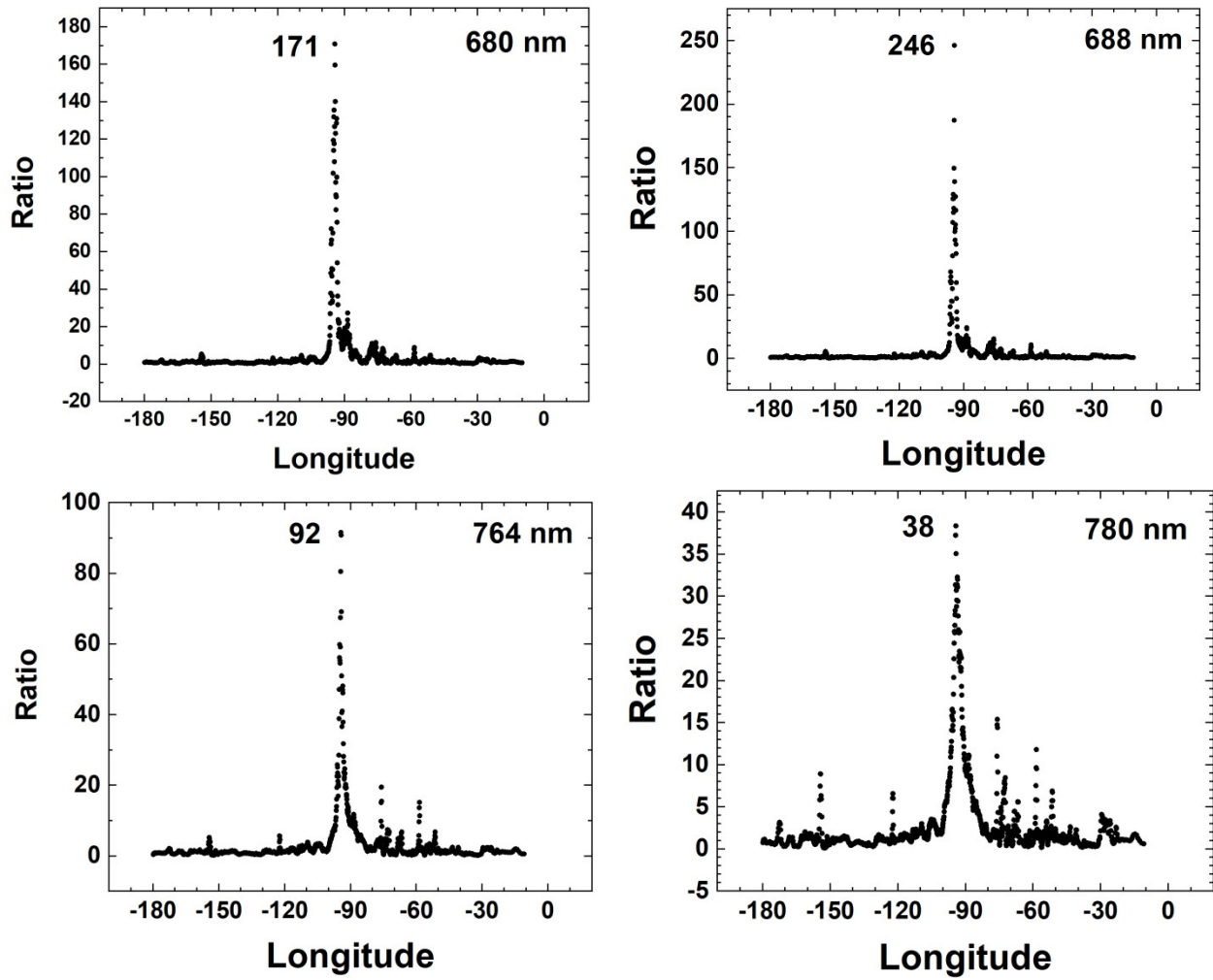


Fig. 6b. The ratio $R_{EN}(\lambda_i) = I(\text{Aug20})/I(\text{Aug21})$ at the time of the Eclipse in Columbia, Missouri for wavelengths 317.5 to 780 nm. The channels 317.5 to 340 nm are affected by ozone absorption and the channels 688 and 764 nm are within the O_2 B and A absorption bands.

615

616

617

618 **F06b Continued**

619

620

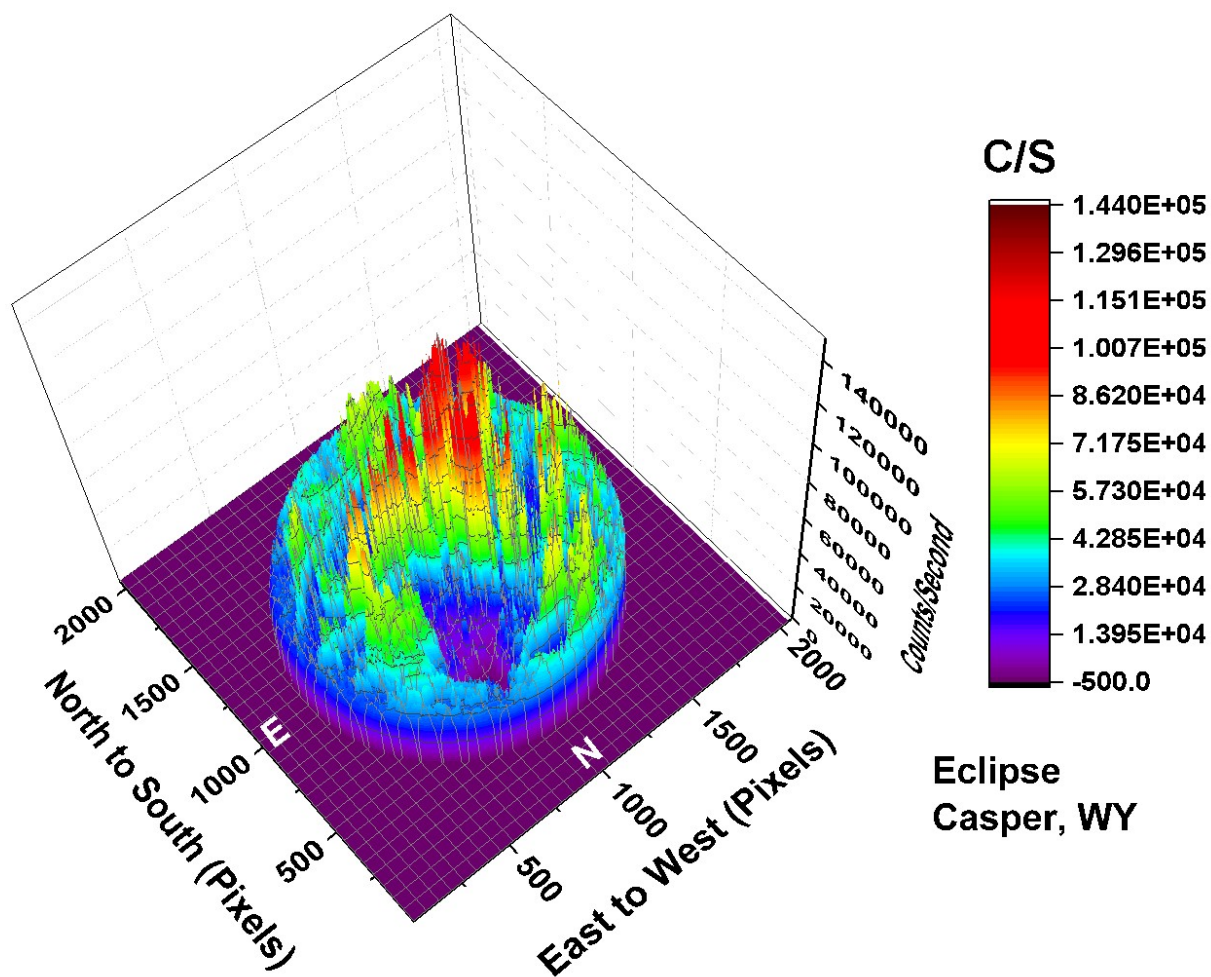


Fig. 7 The C/s observed by EPIC for the 443 nm channel corresponding to the color image shown in Fig. 1. In the data file, the word infinity has been replaced by the number zero. In this image there are approximately 2.59×10^6 illuminated pixels out of $2048^2 = 4.194304 \times 10^6$ pixels (61.8 %).

621

622

623 **F07**

624

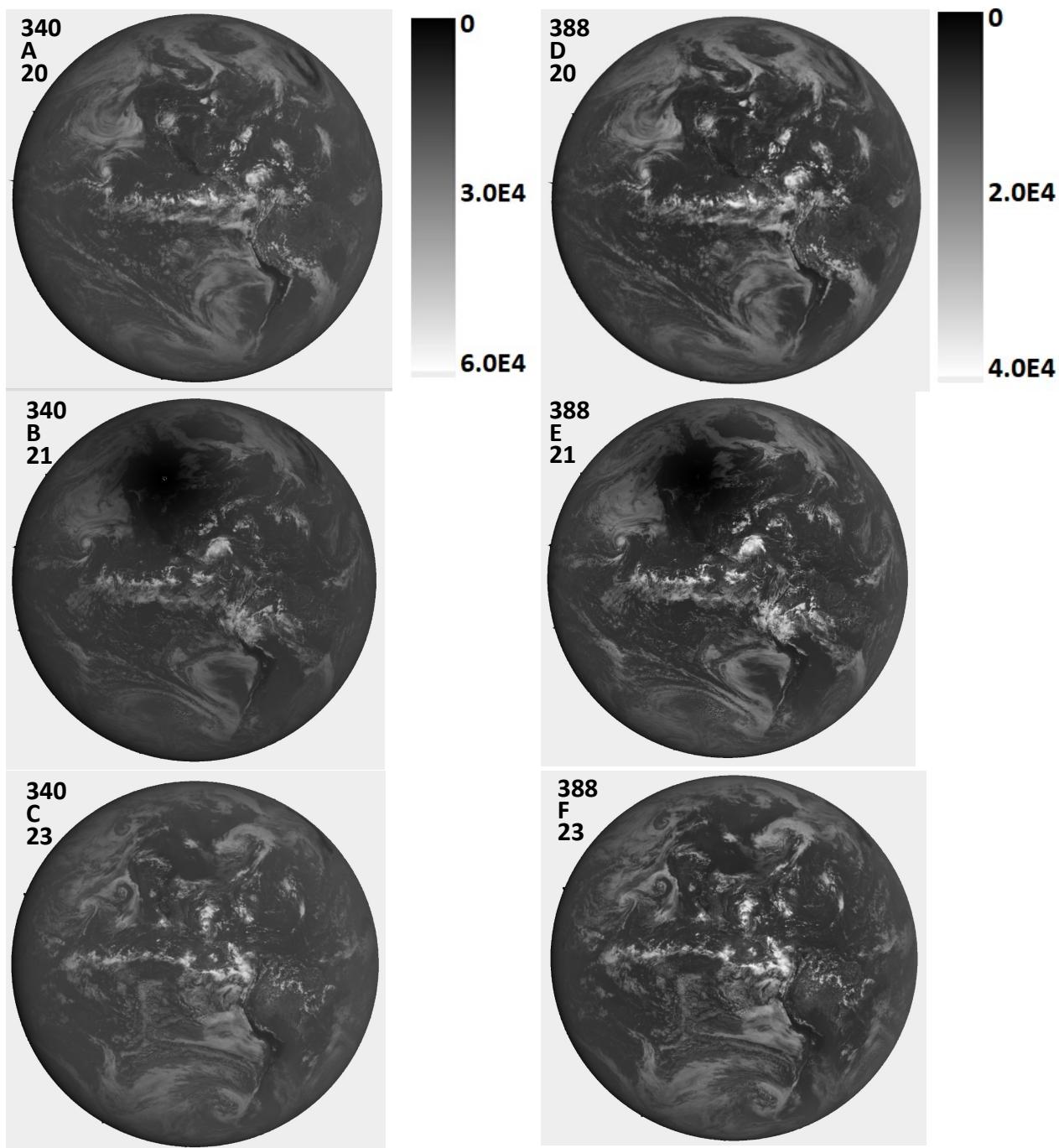


Figure 8a Image in C/s for 340 and 388 nm for 20 Aug. (A+C), 21 Aug. (B+E), and 23 Aug. (C+F). The scale applies to the specific wavelength. North is up.

625

F08a

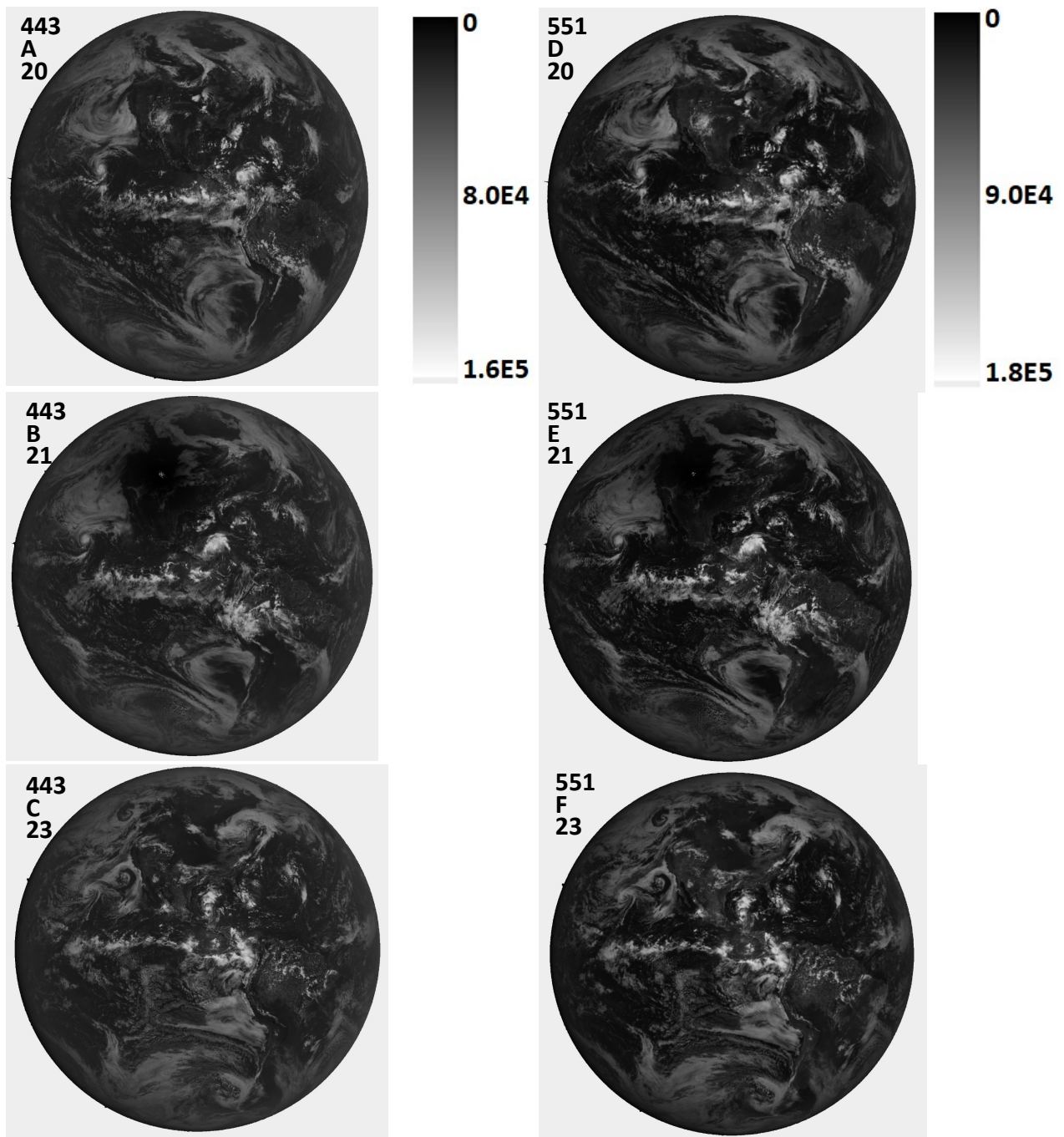


Figure 8b Image in C/s for 443 and 551 nm for 20 Aug. (A+C), 21 Aug. (B+E), and 23 Aug. (C+F). The scale applies to the specific wavelength. North is up.

626

627

628 **F08b**

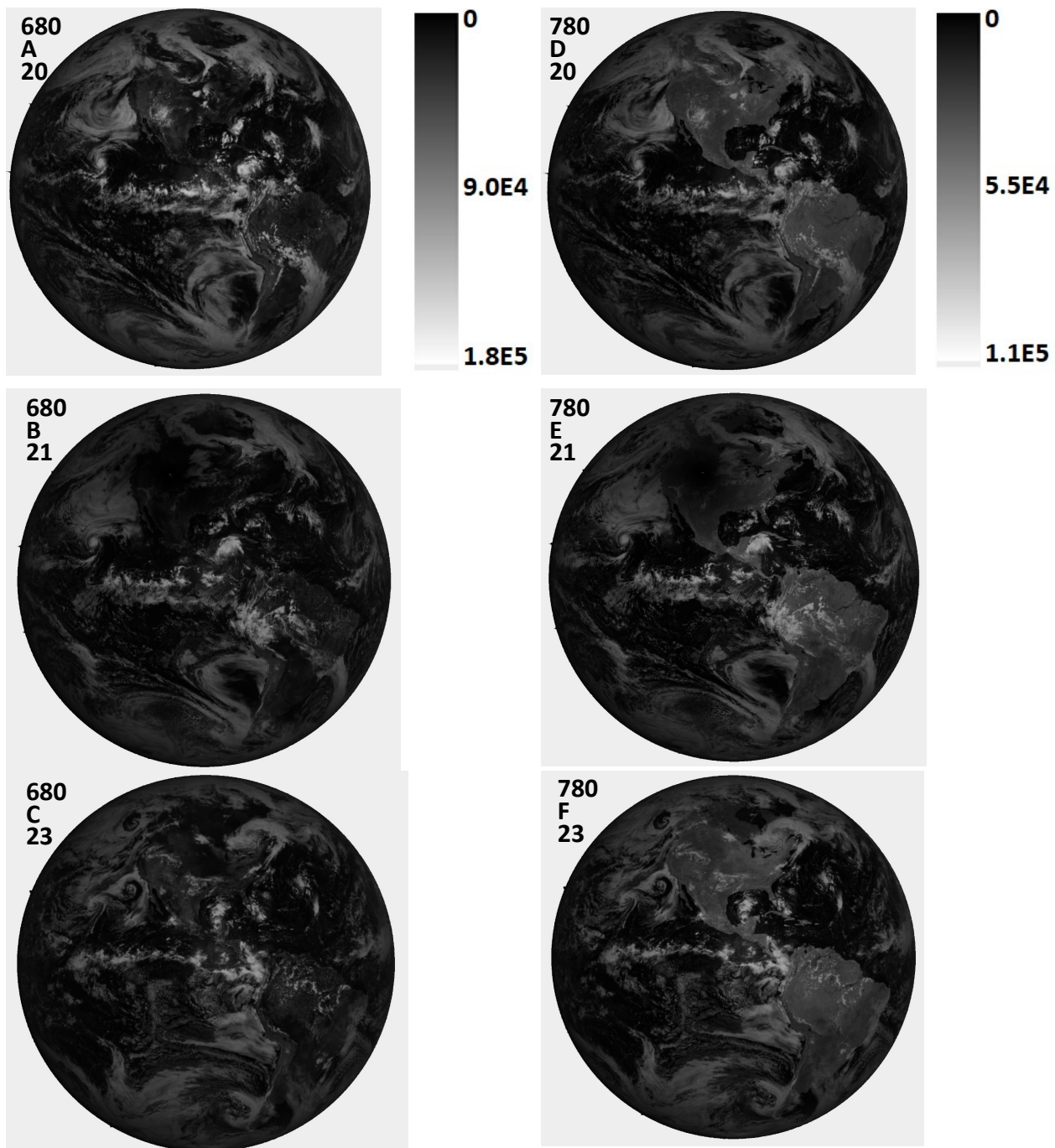


Figure 8c Image in C/s for 680 and 780 nm for 20 Aug. (A+C), 21 Aug. (B+E), and 23 Aug. (C+F). The scale applies to the specific wavelength. North is up.

629

630

631 **F08c**

632

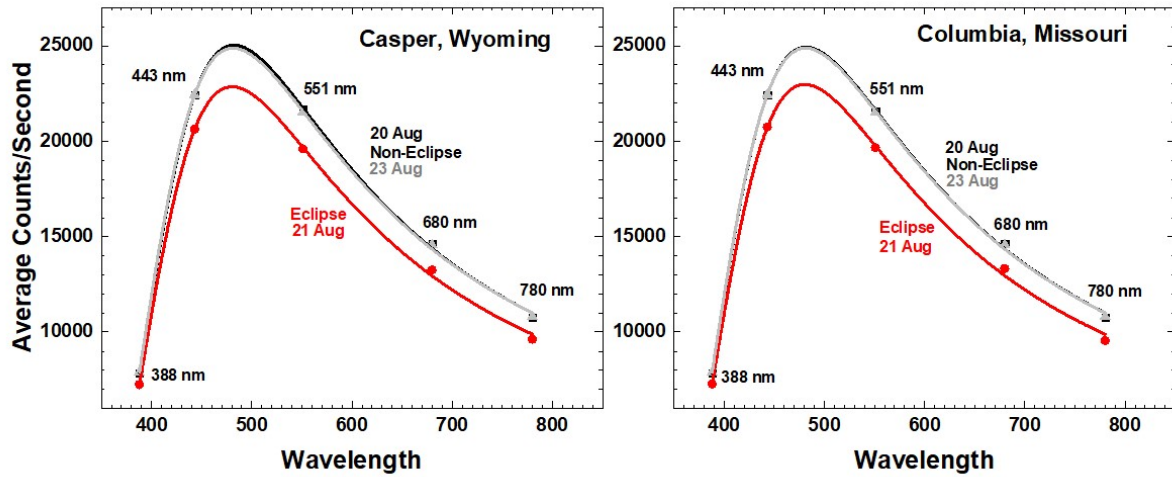


Fig. 9 Average reflected light in C/s for eclipse (21 Aug. red) and non-eclipse (20 Aug. and 23 Aug. (black and grey) days from Table 3 and Eqn. 1 for Casper and Columbia. The locations of the maxima are from curve fitting to the discrete wavelength measurements.

633

634

635 **F09**

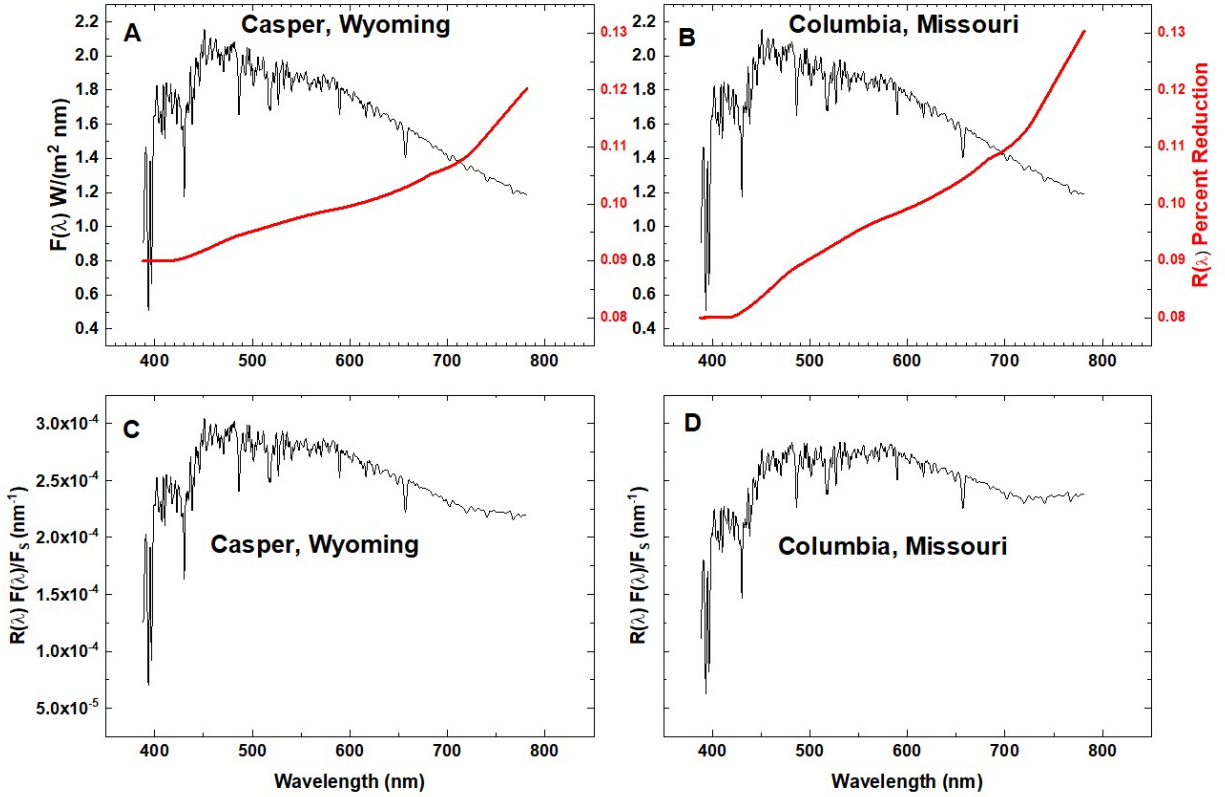


Fig. 10 Solar Irradiance at 1 AU $F(\lambda)$ Watts/(m² nm) (Mayer and Kylling, 2005) and the eclipse reduction function $R(\lambda)$ in percent for Casper, Wyoming (red curve in panel A) and Columbia, Missouri (red curve in panel B). Fractional reduction (nm⁻¹) in reflected solar irradiance in the direction of L-1 for Casper, Wyoming (panel C) and Columbia, Missouri (panel D)

F10

641

642



Fig. A1 The timing and shape of the Moon's shadow over Casper, Wyoming showing the relative location of Casper and Columbia (white circles) at 11:45 MDT (Mountain Daylight Time) and 1:15 CDT (Central Daylight Time). The shadow is moving at about 46 km/minute. (<https://eclipse2017.nasa.gov/eclipse-maps>). The NASA scale size is 50 km.

643

644

645

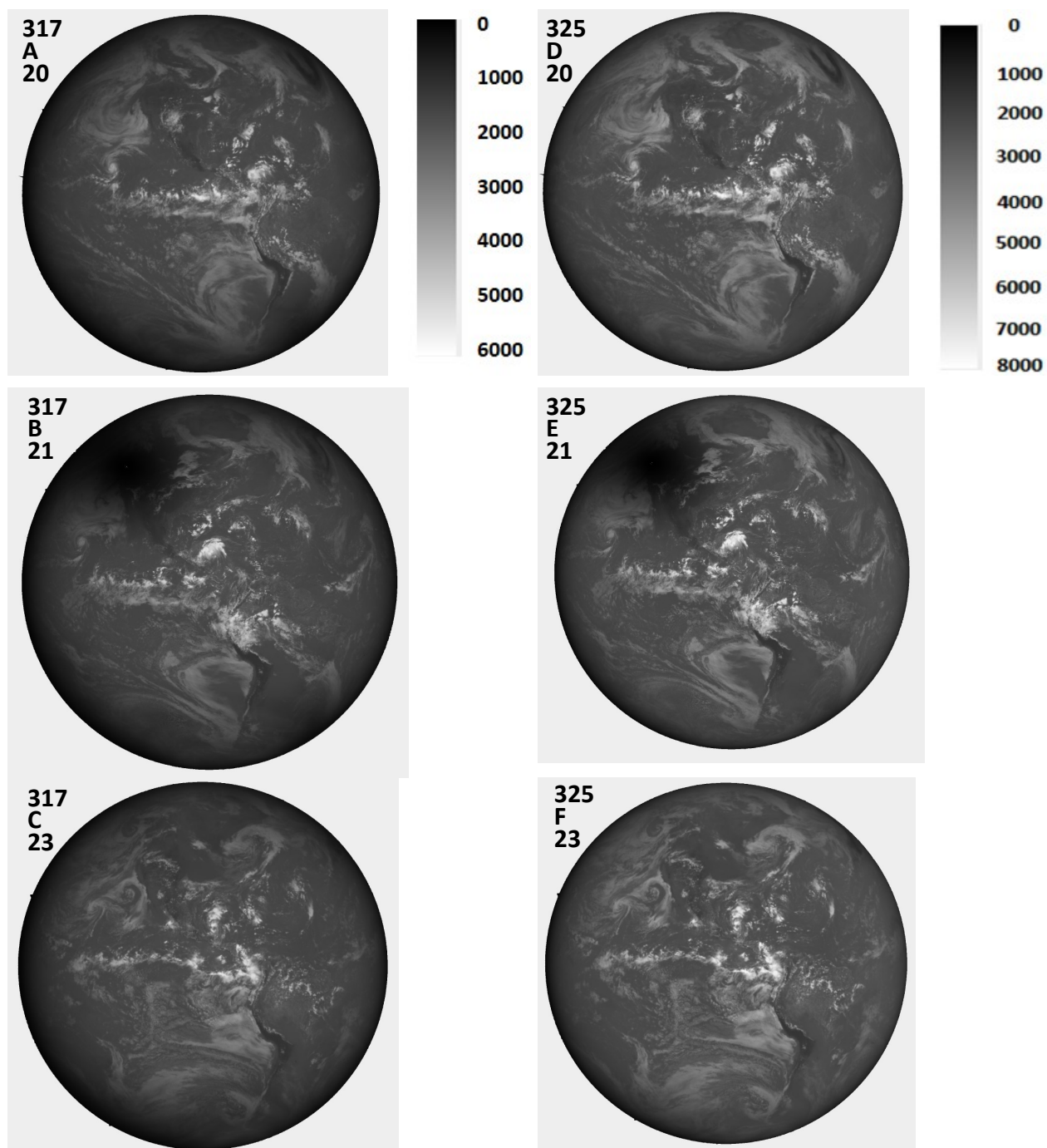


Fig. A2a Image in C/s for 317 and 340 nm for 20 Aug., 21 Aug. and 23 Aug. The scale applies to the specific wavelength. North is up.

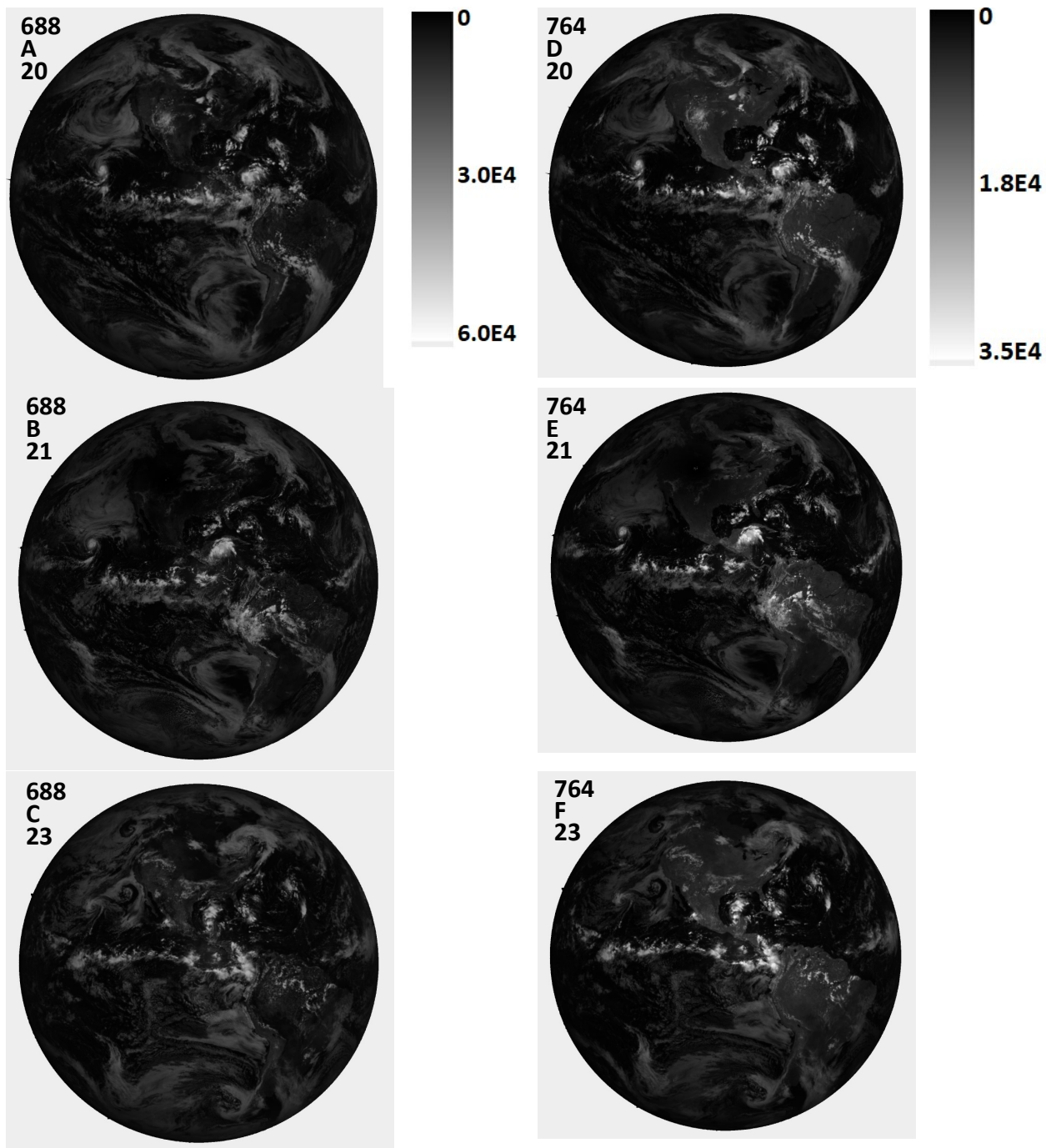


Fig. A2b Image in C/s for 688 and 764 nm for 20 Aug., 21 Aug. and 23 Aug. The scale applies to the specific wavelength. North is up.

650

651

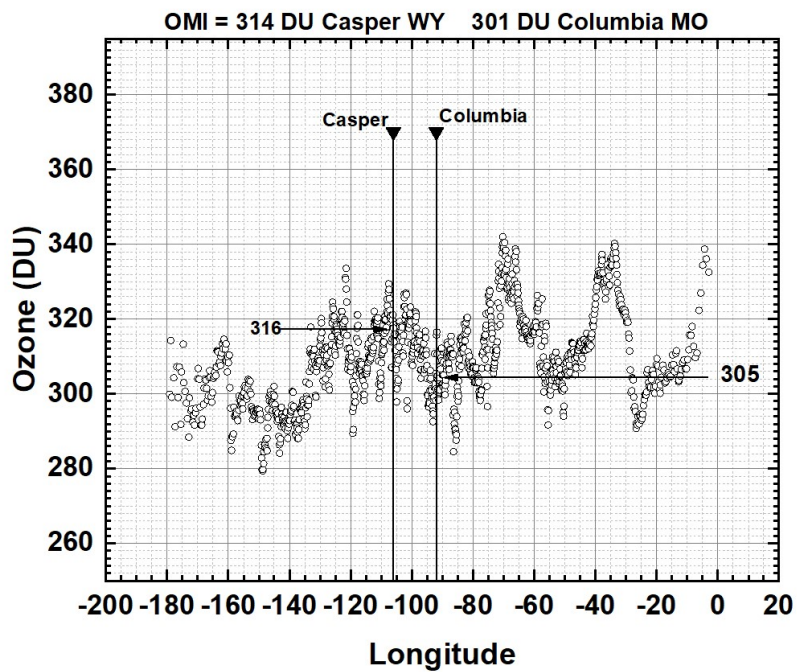


Fig. A3 EPIC measured ozone amounts from 20 August in the vicinity of Casper, WY and Columbia, MO.